

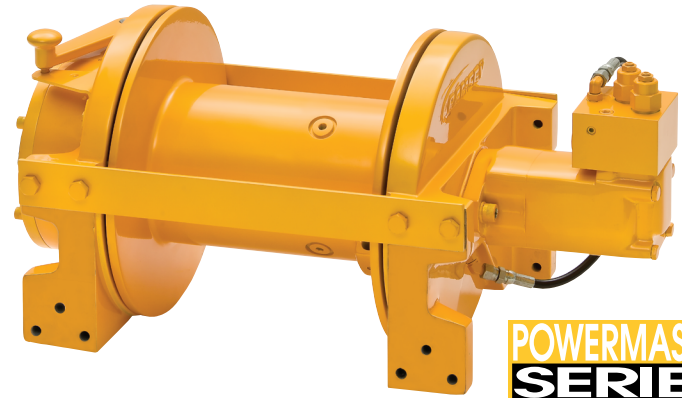


Planetary Winch POWERMASTER 20K

New POWERMASTER 20K planetary winch offers a compact design with reliable pulling power, pull after pull.

POWERMASTER 20K Features

- Easy to install, foot mount and mid mount
- Less weight
- New 20,000 SAE J706 high efficiency multi-stage planetary winch
- Internal braking system-spring applied hydraulic release
- Low profile envelope for compact installation saves weight and space
- Larger drum flanges capable of holding 220 ft. of 9/16" wire rope, SAE J706
- Optional air shift with integrated cylinder for easy clutch operation



Specifications

Rated Line Pull	20,000 lbs.....(9070 kgs)
Gear Reduction 21:1
Weight (without cable) 337 lbs.
Max Flow 30 GPM
Working Pressure2350 PSI

		1	2	3	4	5
*RATED LINE PULL PER LAYER	Lbs.	20,000	17,300	15,200	13,600	12,300
	Kgs.	9,070	7,840	6,890	6,160	5,570
20K Winch	Ft.	30	70	115	165	220
	M	9	21	35	20	67
**LINE SPEED (at 30 GPM)	FPM (MPM)	40 (12.1)	45 (13.6)	51 (15.5)	56 (17)	62 (18.8)

* Cable capacity per layer

** These specifications are based on recommended wire rope of 9/16" (14 mm) diameter EIPS cable and a 14.9 cu.in./Rev. motor.

