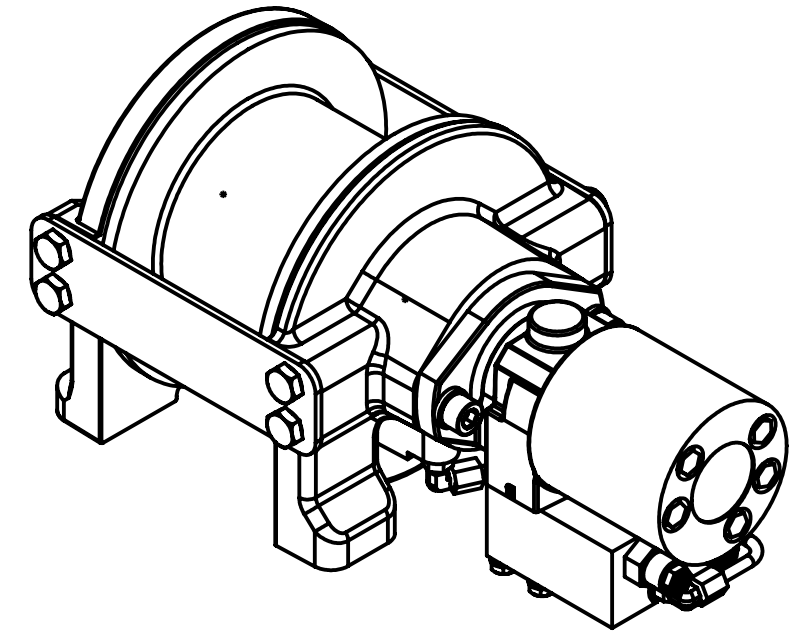
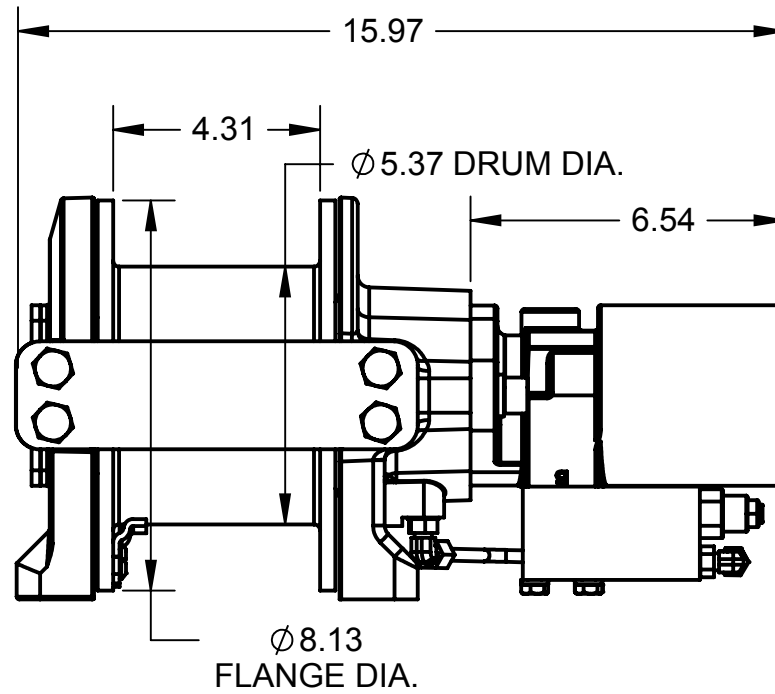
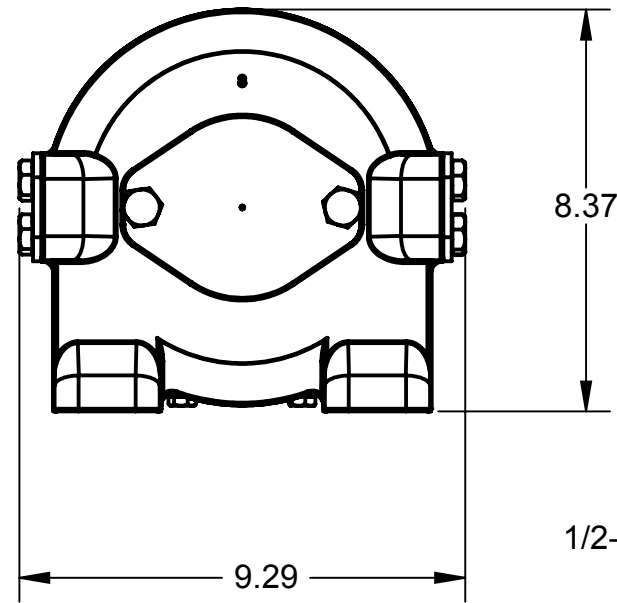


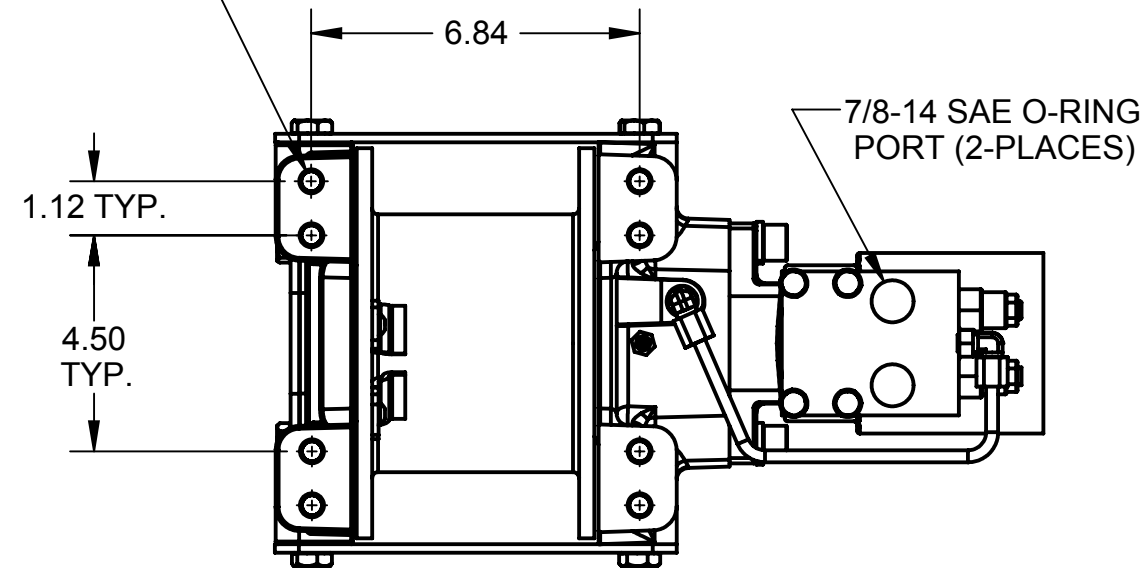
THIS PRINT IS PROVIDED ON A RESTRICTED BASIS AND IS NOT TO BE USED IN ANY WAY DETRIMENTAL TO THE INTERESTS OF THE RAMSEY WINCH COMPANY.

REVISIONS

SYM	DESCRIPTION	ECN	DATE	DR.
A	RELEASE FOR PRODUCTION	14904	6/28/2010	FH
B	ADDED PERFORMANCE CHARTS	15226	1/27/2012	HLW



1/2-13UNC 8PLCS.

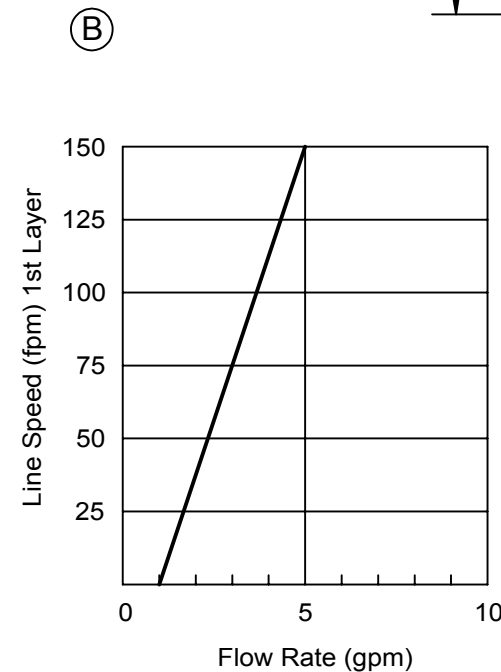
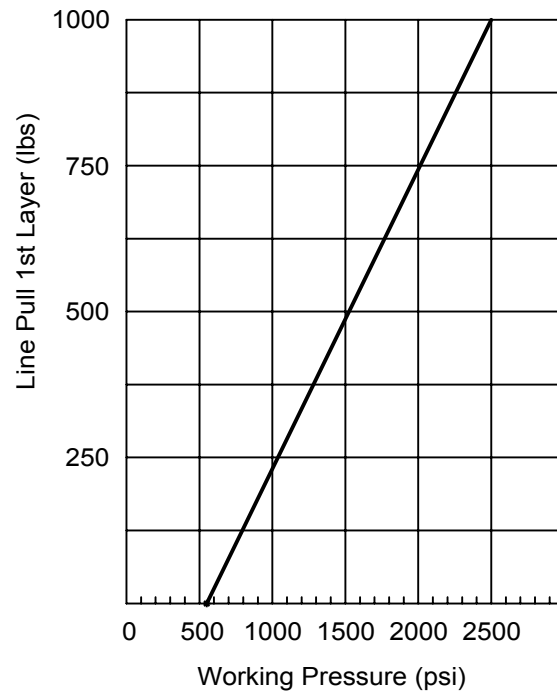


(B)


First Layer Line Pull		1,000 LB			
Weight (without rope)		83 LB			
LAYER OF ROPE		1	2	3	4
* Line Pull Per Layer	lb	1,000	919	850	790

* Rope Capacity Per Layer	ft	22	47	73	102
* Line Speed at 4 GPM	fpm	102	111	121	130

* These specifications are based on recommended 1/4" EIPS wire rope and a 11.9 cu in /Rev. motor.



LIST OF MATERIAL

INCH TOLERANCE UNLESS OTHERWISE SPECIFIED DECIMALS .X ±.06 .XX ±.030 .XXX ±.010 ANGULAR ±0° 30' DEGREES UNLESS OTHERWISE SPECIFIED, ALL DIMENSIONS ARE IN INCHES.	NAME	DATE	TITLE RCH1000	 RAMSEY WINCH COMPANY TULSA, OKLAHOMA
	DRAWN BY FH	06-28-10		
	APPROVED BY SEE ECN	SCALE (DO NOT SCALE) NEXT ASSY 1:4		
	126200 SHEET 1 OF 1		REV. B	