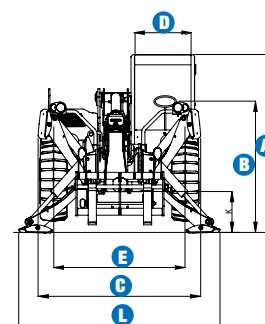
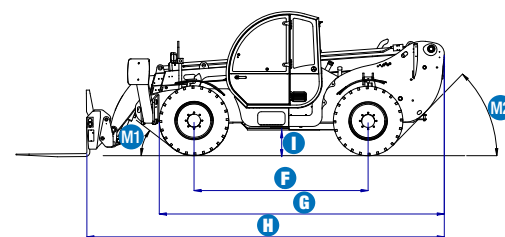


## Specifications

MODEL		GTH™-4017 EX	
MEASUREMENTS	Metric	Imperial	
Lifting height maximum	16.72 m	54 ft 10 in	
Lifting capacity maximum	4,000 kg	8,818 lbs	
Lift capacity at maximum height	2,500 kg	5,511 lbs	
Lift capacity at maximum reach	600 kg	1,323 lbs	
Forward reach maximum	12.55 m	41 ft 2 in	
Reach at maximum height	59 cm	1 ft 11 in	
<b>A</b> Height	2.61 m	8 ft 7 in	
<b>B</b> Height at steering wheel	1.65 m	5 ft 5 in	
<b>C</b> Width	2.45 m	8 ft	
<b>D</b> Inside cab width	78 cm	2 ft 7 in	
<b>E</b> Track	1.98 m	6 ft 6 in	
<b>F</b> Wheelbase	2.85 m	9 ft 4 in	
<b>G</b> Length at front wheels	4.70 m	15 ft 5 in	
<b>H</b> Length at fork-holder plate	6.49 m	21 ft 3 in	
<b>I</b> Ground clearance	42 cm	1 ft 5 in	
<b>L</b> Overall width, stabilisers extended	2.95 m	9 ft 8 in	
<b>M1</b> Obstruction angle	37°	37°	
<b>M2</b> Departure angle	32°	32°	



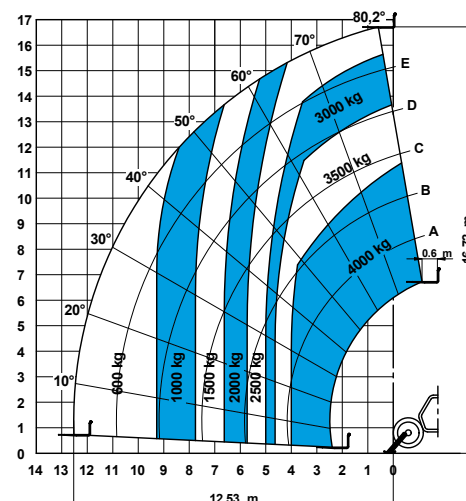
PRODUCTIVITY			
Inside/outside turning radius	2.15 m/4.5 m	7 ft/14 ft 9 in	
Break out force (with 500L shovel SAE J 732/80)	7,900 kg	17,415 lbs	
Towing capacity at dynamometer	8,200 kg	18,076 lbs	
Travel speed maximum	35 km/h	22 mph	
Fork-holder plate rotation	145°	145°	
Chassis levelling on the front axle	+/- 8°	+/- 8°	
Floating forks	L 1200 mm Section 120 x 50 mm	L 3 ft 11 in Section 5 in x 2 in	
Tyres (DIN 70361)	405/70-24" PR14 8 holes wheel disc		
Lifting/lowering speed	14 sec./10 sec.	14 sec./10 sec.	
Extension/retraction speed	26 sec./16 sec.	26 sec./16 sec.	

POWER			
Engine	Perkins 1104 D-44T 4-cylinder Turbo Diesel 74.4 kW (101 HP), Tier3		
Tank capacities			
Fuel	135 L	30 gal	
Engine oil	7 L	1.5 gal	
Hydraulic oil	150 L	48 gal	
Hydraulic output/pressure	95 L / min - 270 bar	30 gal / min - 3,916 psi	

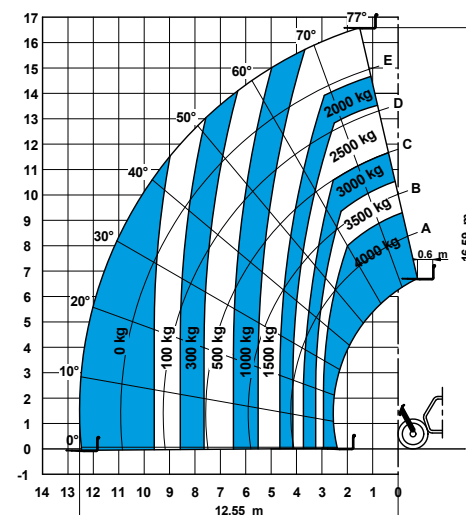
WEIGHT			
Weight*	11,850 kg	26,122 lbs	

STANDARD COMPLIANCE	
	Operating cab conforms to ISO3471 (ROPS) and ISO3449 (FOPS)
	Low emission engine conforms to UE 97/68 directives.
	GOST R 50950-96

\* Weight will vary depending on options and/or country standards



Lift capacity chart (with stabilisers)



Lift capacity chart (without stabilisers)

# Features

## STANDARD FEATURES

### MEASUREMENTS

- 4,000 kg (8,818 lb) maximum lift capacity
- 16.72 m (54 ft 10 in) maximum lift height
- 12.55 m (41 ft 2 in) maximum forward reach

### PRODUCTIVITY

- 4 x 4
- 4 - wheel steer
- 3 steering modes:
  - front wheel steer
  - crab steer
  - coordinated steer
- Power assisted steering
- Front stabilisers
- Hydrostatic transmission with variable displacement pump and motor electronically controlled
- Two-speed mechanical gearbox
- Multifunction electro-proportional 4 x 1 joystick
- Limited slip differential on front axle
- Chassis levelling on front axle +/- 8°
- Floating forks
- Attachment holder plate with hydraulic quick coupling
- Door with two sections: steel on bottom, glass on top. Both sections open separately
- Boom length and boom angle indicators correspond to the load charts
- Adjustable suspended seat
- Large diameter steering wheel
- Front windscreen wipers
- Sunshield
- Roof protection grid inside cab
- Front & rear lights
- Oil immersed, multi-disc brake on both axles
- Lockable fuel tank
- Longitudinal stability control system with load monitor
- Visible display with coloured LEDs
- Audible alarm
- Automatic lock-out of boom extension and lowering
- Lockout of stabilisers and chassis levelling with boom raised and/or boom extended
- Automatic oscillation lockout on rear axle
- Electrical inching brake pedal activated
- Maintenance collar

### POWER

- Perkins Turbo Diesel 74.4 kW (101 HP)

### TYRES

- 405/70-24" PR14. 8 holes wheel disc



## OPTIONS & ACCESSORIES

### PRODUCTIVITY

- Air conditioning
- Second hydraulic line on boom
- Windshield protection grid
- Additional rear view mirror
- Adjustable spotlight on cab
- Adjustable spotlight on boom
- Wiper on cab roof
- Control enable switch
- Concrete mixing bucket pre-arrangement
- Pre-arrangement for hydraulic jib/winch
- Pre-arrangement for man-platform
- Rear axle alignment sensor
- 6 ton towing hitch
- Radio remote control
- Spare wheel
- 10 ton hydraulic jack 10 ton and 24 mm wheel nut wrench

### ATTACHMENT OPTIONS

- Loading shovel 800 L
- Concrete bucket 500/800 L manual/hydraulic discharge
- Concrete mixing bucket 500 L with remote control
- Fork side-shift (+/- 100 mm)
- FEM 3 plate and forks kit
- Fixed hook on plate
- 2 m jib, 2000 kg capacity
- 4 m jib, 900 kg capacity
- 4 m jib with 900 kg capacity hydraulic winch
- Hydraulic winch 3000 kg
- Brick-holder basket
- Fixed and rotating man-platform up to 4.64 m

### UK

Millennium House  
Brunel Drive  
Newark NG24 2DE  
UK  
Tel: +44 (0)1476 584333  
Fax: +44 (0)1476 584334

### France

10, ZA de la Croix St. Mathieu  
28320 Gallardon  
France  
Tel: +33 (0)2 37 26 09 99  
Fax: +33 (0)2 37 26 09 98

### Germany

Finienweg 3  
28832 Achim/Bremen  
Germany  
Tel: +49 (0)4202 8852-0  
Fax: +49 (0)4202 8852-25

### Spain

Gaià 31, Pol. Ind. Plá d'en Coll  
08110 Montcada i Reixac  
Barcelona  
Spain  
Tel: +34 93 572 50 90  
Fax: +34 93 572 50 91

### Scandinavia

Importgatan 17  
422 46 Hisings Backa  
Sweden  
Tel: +46 31 57 51 00  
Fax: +46 31 57 90 20

### Middle East

Terex Middle East  
PO Box 282325, Dubai  
U.A.E.  
Tel: +971 4 339 1800  
Fax: +971 4 339 1802  
Email: InfoME@terex.com

### Genie United States

18340 NE 76th Street  
P.O. Box 97030  
Redmond, WA  
USA 98073-9730  
Tel: +1 425 881-1800  
Fax: +1 425 883-3475

**Email:** AWP-InfoEurope@terex.com

### Distributed By: