



Log Handler

NET ENGINE POWER	162 hp (121 kW) @ 2,000 rpm
OPERATING WEIGHT	54,200 lbs (24,600 kg)
MAX REACH	33' 7" (10,240 mm)
MAX LIFTING CAPACITY	23,800 lbs (10,795 kg)



LOG HANDLER MHL 434

Specifications

Engine	
Manufacturer & type	Deutz-BF4M 1013 FC
Type	4-cylinder, turbocharged diesel and air cooler
Engine output	150 hp (112 kW)
Nominal speed	2,000 rpm
Displacement	293 in ³ (4.8 L)
Cooling system	Water and charge air cooling
Emission standards	COM II/TIER II
Air filter design	Two-stage filter with safety valve
Fuel tank	79 US gal (300 L)

Operating Weights	
Basic machine including one supporting blade and work attachment:	
Reach 31.1" (9.5 m)	48,722 lbs (22.100 kg)
Reach 35.1" (10.7 m)	50,926 lbs (23.100 kg)

Electrical System	
Operating voltage	24 V
Batteries	2 x 12 V / 100 Ah / 760 A (accord. to EN)
Lighting set	2 Xenon-driving lights on upper carriage/rear of chassis, 2 Xenon-dipperstick mounted working floodlights, 3-Xenon cabin-mounted working floodlights, rear side-marker and turn signal lamps.

Travel Drive	
Hydrostatic drive through infinitely variable axial piston motor and directly mounted travel brake valves, two-speed switch gear, 4-wheel drive.	
Travel speeds 1st gear	0 - 3.7 mph (0 - 6 kmh)
Travel speeds 2nd gear	0 - 12.4 mph (0 - 20 kmh)
Turning radius	18' 7" (5.7 m)

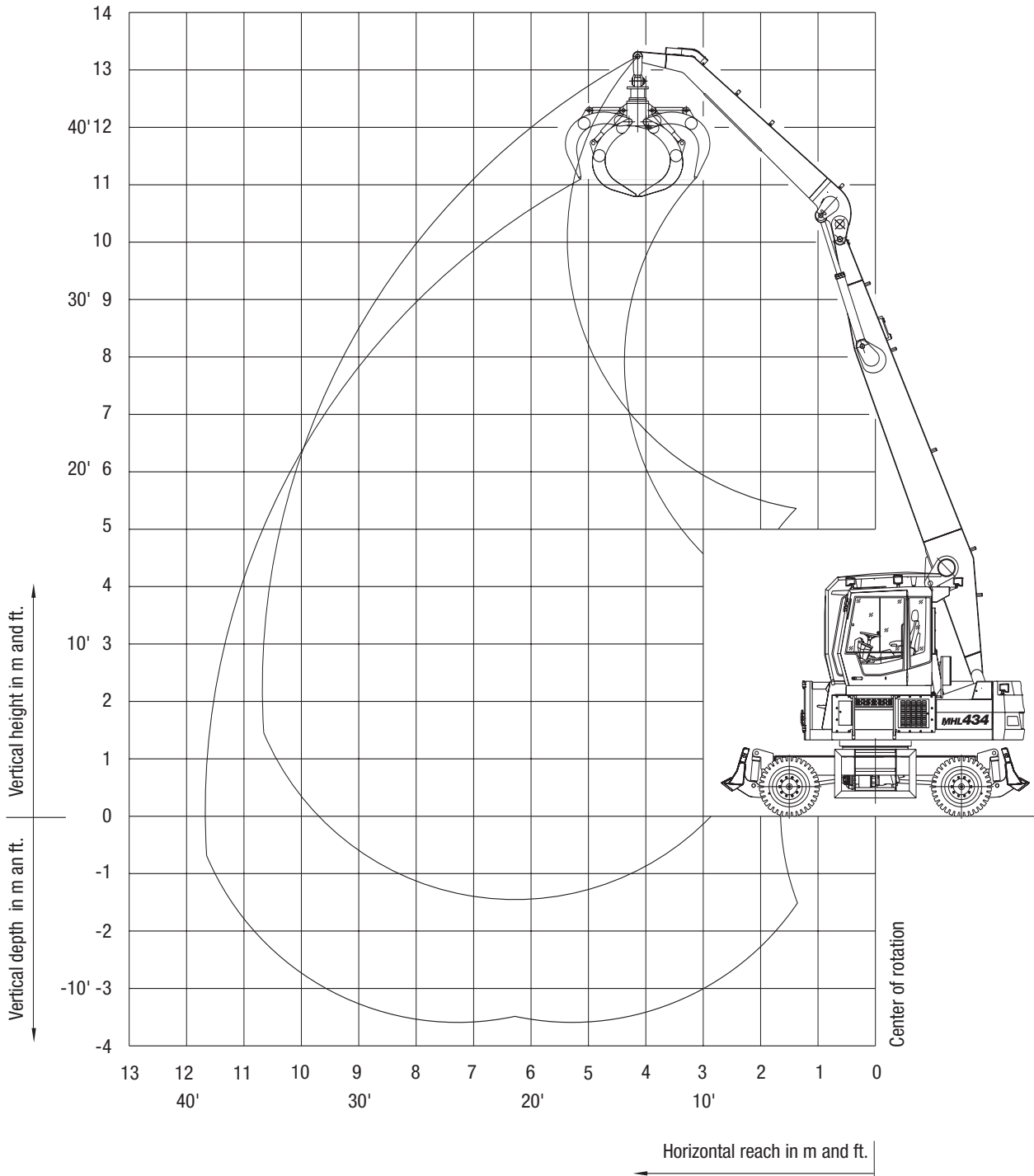
Swing System	
Ring gear	Internally toothed ring gear
Drive	Multi-stage planetary gear with integrated multi-disc brake.
Upper carriage swing speed	0 - 6 rpm

Working Range Diagram

MHL 434 reach 31' (9.5 m)

Work equipment: box-type boom 24' 7" (7.3 m), dipperstick 14' (4.2 m)

Lumber grab: Dimensions according to job conditions.

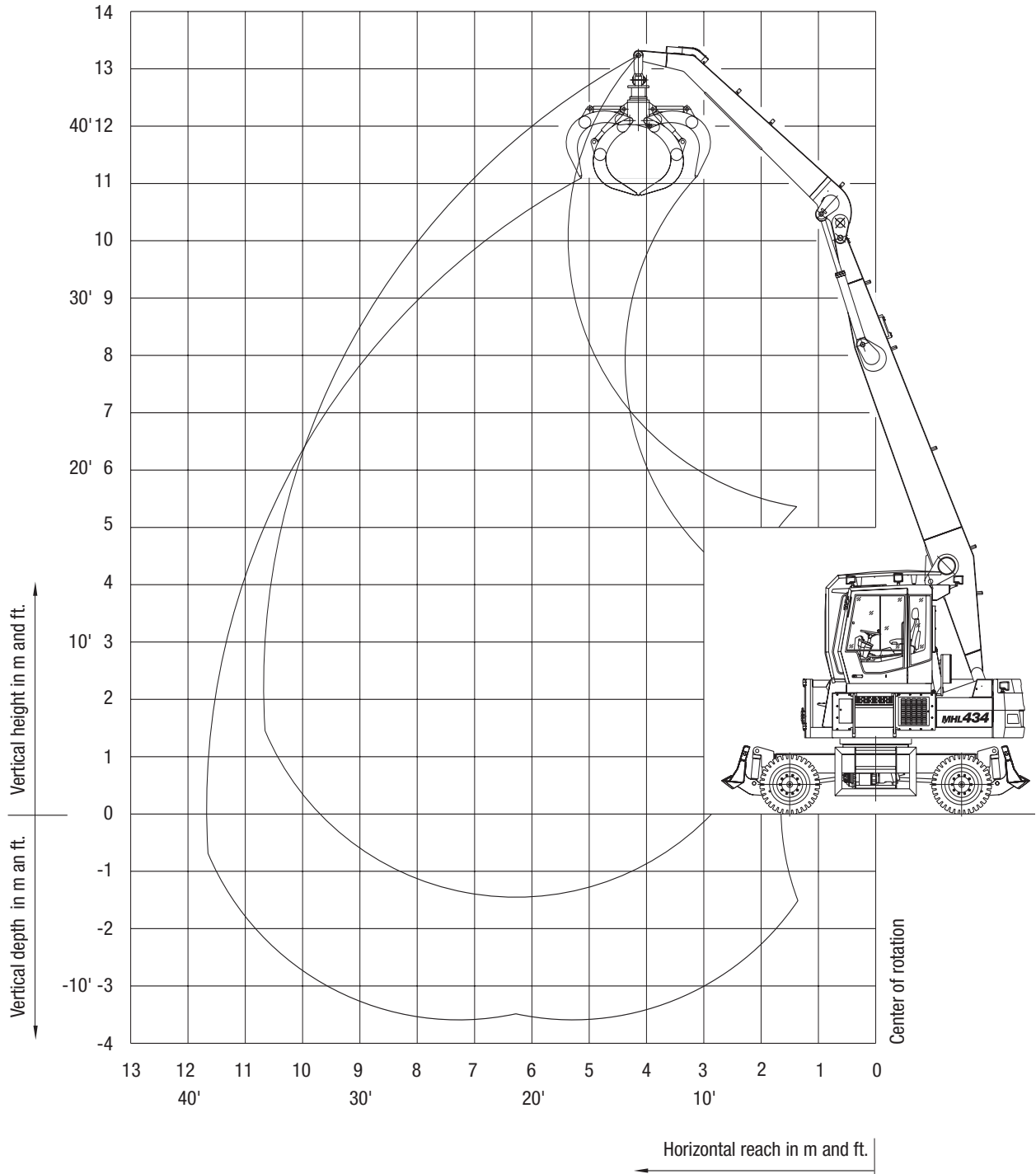


Working Range Diagram

MHL 434 reach 35' (10.7 m)

Work equipment: box-type boom 27' 2" (8.2 m), dipperstick 15' (4.75 m).

Lumber grab: Dimensions according to job conditions.



Lifting Capacities

MHL 434 reach 41' 1" (9.5 m)

Work equipment: box-type boom 23' 9" (7.3 m), dipperstick 13' 8" (4.2 m).

Height in ft	Undercarriage stabilizers	Reach in ft				
		10	15	20	25	30
30	non supported			13,000	8,370*	
	1-blade supported			13,670* (13,670*)	8,370* (8,370*)	
	2-blade supported			13,670* (13,670*)	8,370* (8,370*)	
25	non supported			12,780	9,260	
	1-blade supported			13,890* (13,890*)	9,920 (11,680*)	
	2-blade supported			13,890* (13,890*)	11,680* (11,680*)	
20	non supported		16,530*	12,560	9,040	7,270
	1-blade supported		16,530* (16,530*)	13,670 (14,110*)	9,920 (12,340*)	7,490 (8,820*)
	2-blade supported		16,530* (16,530*)	14,110* (14,110*)	11,900 (12,340*)	8,820* (8,820*)
15	non supported	22,490*	17,640*	12,340	9,040	6,830
	1-blade supported	22,490* (22,490*)	17,640* (17,640*)	13,450 (14,550*)	9,700 (12,560*)	7,490 (9,260*)
	2-blade supported	22,490* (22,490*)	17,640* (17,640*)	14,550* (14,550*)	11,680 (12,560*)	9,040 (9,260*)
10	non supported	24,690*	17,640	11,900	8,820	6,830
	1-blade supported	24,690* (24,690*)	18,520* (18,520*)	13,000 (14,990*)	9,480 (12,560*)	7,490 (10,580*)
	2-blade supported	24,690* (24,690*)	18,520* (18,520*)	14,990* (14,990*)	11,460 (12,560*)	9,040 (10,580*)
5	non supported	16,970*	16,970	11,460	8,600	6,610
	1-blade supported	16,970* (16,970*)	18,740 (18,960*)	12,560 (15,210*)	9,260 (12,560*)	7,270 (10,140*)
	2-blade supported	16,970* (16,970*)	18,960* (18,960*)	15,210* (15,210*)	11,460 (12,560*)	8,820 (10,140*)
0	non supported		14,330*	16,530	11,240	8,370
	1-blade supported	14,330* (14,330*)	18,300* (18,300*)	12,340 (14,550*)	9,260 (11,900*)	
	2-blade supported	14,330* (14,330*)	18,300* (18,300*)	14,550* (14,550*)	11,240 (11,900*)	
-5	non supported		16,310	11,020		
	1-blade supported		16,530* (16,530*)	12,120 (13,450*)		
	2-blade supported		16,530* (16,530*)	13,450* (13,450*)		

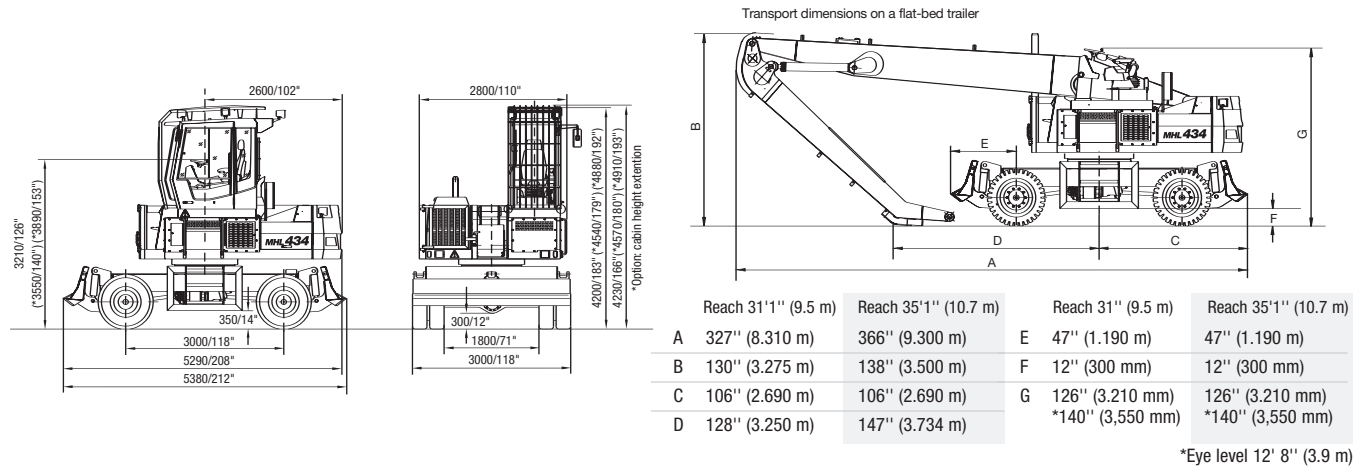
Height in m	Undercarriage stabilizers	Reach in (m)				
		3	4.5	6	7.5	9
9	non-supported			5.9	3.8*	
	1-blade supported			6.2* (6.2*)	3.8* (3.8*)	
	2-blade supported			6.2* (6.2*)	3.8* (3.8*)	
7.5	non-supported			5.8	4.2	
	1-blade supported			6.3* (6.3*)	4.5 (5.3*)	
	2-blade supported			6.3* (6.3*)	5.3* (5.3*)	
6	non-supported		7.5*	5.7	4.1	3.3
	1-blade supported		7.5* (7.5*)	6.2 (6.4*)	4.5 (5.6*)	3.4 (4.0*)
	2-blade supported		7.5* (7.5*)	6.4* (6.4*)	5.4 (5.6*)	4.0* (4.0*)
4.5	non-supported	10.2*	8.0*	5.6	4.1	3.1
	1-blade supported	10.2* (10.2*)	8.0* (8.0*)	6.1 (6.6*)	4.4 (5.7*)	3.4 (4.2*)
	2-blade supported	10.2* (10.2*)	8.0* (8.0*)	6.6* (6.6*)	5.3 (5.7*)	4.1 (4.2*)
3	non-supported	11.2*	8.0	5.4	4.0	3.1
	1-blade supported	11.2* (11.2*)	8.4* (8.4*)	5.9 (6.8*)	4.3 (5.7*)	3.4 (4.8*)
	2-blade supported	11.2* (11.2*)	8.4* (8.4*)	6.8* (6.8*)	5.2 (5.7*)	4.1 (4.8*)
1.5	non-supported	7.7*	7.7	5.2	3.9	3.0
	1-blade supported	7.7* (7.7*)	8.5 (8.6*)	5.7 (6.9*)	4.2 (5.7*)	3.3 (4.6*)
	2-blade supported	7.7* (7.7*)	8.6* (8.6*)	6.9* (6.9*)	5.2 (5.7*)	4.0 (4.6*)
0	non-supported	6.5*	7.5	5.1	3.8	
	1-blade supported	6.5* (6.5*)	8.3* (8.3*)	5.6 (6.6*)	4.2 (5.4*)	
	2-blade supported	6.5* (6.5*)	8.3* (8.3*)	6.6* (6.6*)	5.1 (5.4*)	
-1.5	non-supported		7.4	5.0		
	1-blade supported		7.5* (7.5*)	5.5 (6.1*)		
	2-blade supported		7.5* (7.5*)	6.1* (6.1*)		

Values are valid for working diagram on page 2.

The values are stated in tons (t) or lbs. The pump pressure for this table is 360 bar (5,220 psi). The values amount to 75% of the static tipping load or 87% of the hydraulic lifting force (marked *), in accordance with ISO 10567. When the machine is standing on solid and level ground, these values apply to slewing operations through 360°. The values in brackets apply in the lengthwise direction of the undercarriage over the blade. The weight of the attached load hoisting implement (grab, load hook etc.) must be deducted from the carrying capacity values. In accordance with EC guidelines, hose-rupture safety valves on the lift cylinders and overload warning device are required for crane operations.

Log Handler MHL 434

Dimensions/Transport Dimensions



Specifications

Hydraulic System

Single circuit hydraulic system with flow-on-demand control for optimal use of the available engine output.

Separate oil cooler with large cooling surface, temperature controlled fan speed.

Hydraulic oil filter integrated in the oil tank

Central lubricating system as standard

Maximum pump capacity 85 US gpm (320 Lpm) at 2,000 rpm

Maximum operating pressure (5,221 psi) 360 bar

Hydraulic oil tank 85 US gal (320 L)

Brakes

Service brake: Hydraulic single-circuit braking system acting on all four wheel pairs.

Parking brake: Electro-hydraulic spring-loaded accumulator brake on gear box acting on both front and rear axle.

Safety Equipment

Required when machine is used for load hook operations in compliance with EN 474-5. Protection of cab ensured by work equipment operating range limit.

For more information, product demonstration, or details on purchase, lease and rental plans, please contact your local TEREX Fuchs Distributor.



TEREX Fuchs

8800 Rostin Road
Southaven, MS 38671
USA

TEL 662-393-1800
SALES 866-837-3923
FAX 662-393-1700
WEB www.terex.com
EMAIL sales@terexca.com

Cab

Cab: ergonomically shaped driver's cab with functional design and excellent all-round visibility, rigid mounted with standard eye level of 11' 6" (3.55 m), optional 12' 8" (3.9 m) / 13' 9" (4.23 m).

Driver's seat: air-cushioned comfort seat with pneumatically adjustable lumbar support, safety belt and integrated headrest, seat heating available on request. Seat position, seat inclination and seat cushion multi-adjustable in line with position of armrests and pilot control units, allowing fatigue-free operations. Joy-Stick steering, automatic steering reversal as standard.

Infinitely variable hot water heating with 3-speed fan, 4 adjustable defroster nozzles.

Air conditioning as standard

Up and over type front windshield with pull-down sunblind, lift-up skylight on cab roof.

Option: cab with bullet-proofed glass or LEXAN glass, windshield screen, auxiliary heating, stereo cassette radio, steering wheel.

Acoustic power level (guaranteed)

LwA = 104 dB(A)

Undercarriage

Front axle: Rigid mounted steering axle with integrated drum brake, maximum steering angle 29°.

Rear axle: Oscillating rear axle with oscillating axle lock and integrated drum brake, maximum steering angle 29°.

Stabilizers

Front-mounted supporting blade,
optional: rear-mounted supporting blade.

Tires

Pneumatic tires 8-fold, 10.00-20

4-wheel steering

Logging Grabs

Capacity up to 2.2 yd³ (1.7 m³) optional, according to job-site conditions