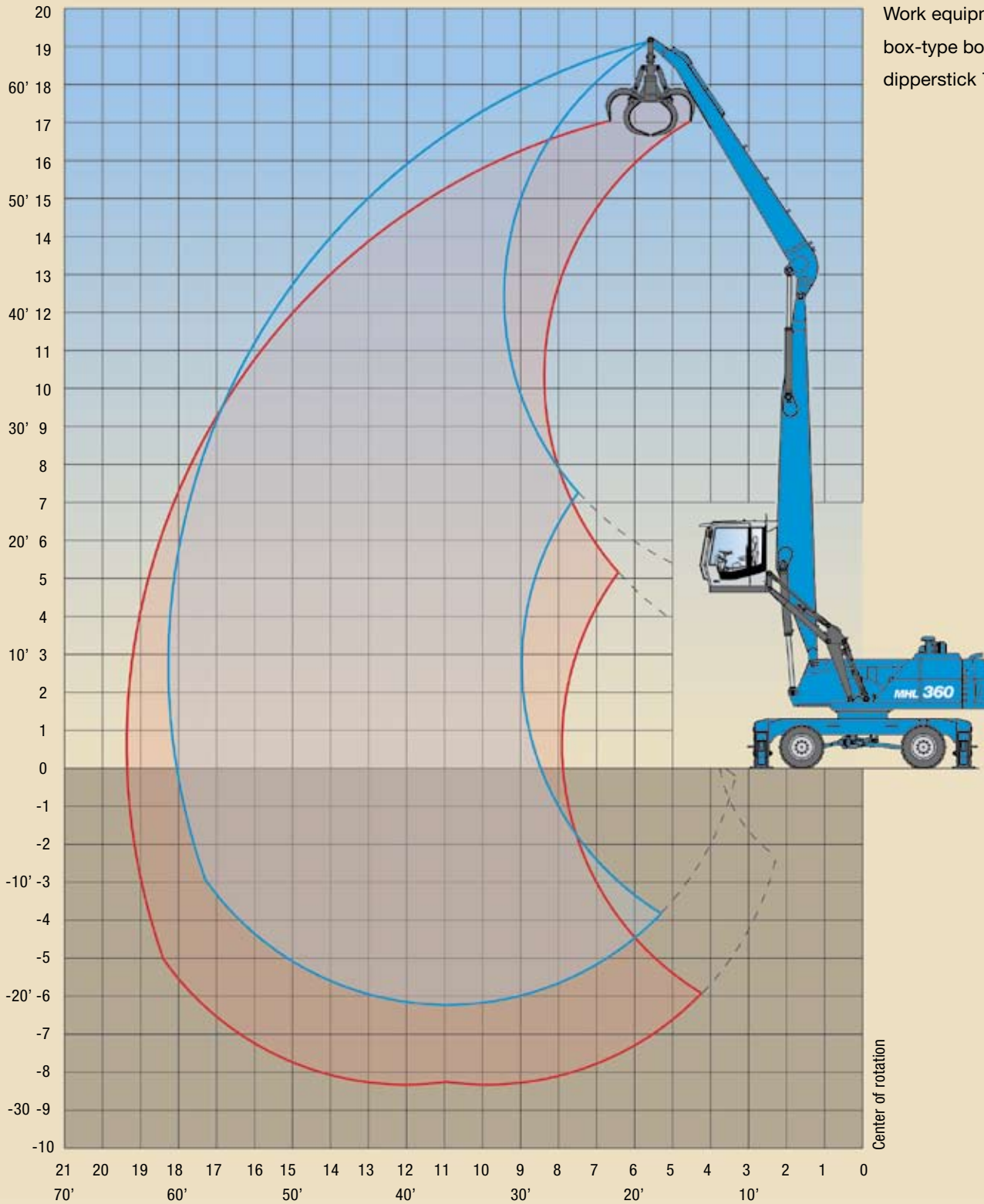


WORKING DIAGRAM

MHL 360D REACH 18 m (59')

Work equipment:
box-type boom 9.7 m (32'),
dipperstick 7.8 m (25.6')



◀ Reach in m and ft

LIFTING CAPACITY

MHL 360D REACH 18 m (59')

HEIGHT (m)	UNDERCARRIAGE STABILIZERS	REACH (m)									
		4.5	6	7.5	9	10.5	12	13.5	15	16.5	18
15	non supported				(8.8*)	(6.8)	(5.3)				
	4-pt. supported				8.8* (8.8*)	7.9* (7.9*)	6.3* (6.3*)				
13.5	non supported					(7.0)	(5.5)	(4.3)			
	4-pt. supported					7.7* (7.7*)	7.0* (7.0*)	5.9* (5.9*)			
12	non supported					(7.0)	(5.5)	(4.4)	(3.5)		
	4-pt. supported					7.7* (7.7*)	6.9* (6.9*)	6.3* (6.3*)	5.1* (5.1*)		
10.5	non supported					(6.9)	(5.4)	(4.4)	(3.5)		
	4-pt. supported					7.7* (7.7*)	6.9* (6.9*)	6.3* (6.3*)	5.4 (5.7*)		
9	non supported				(8.8)	(6.7)	(5.3)	(4.3)	(3.5)	(2.8)	
	4-pt. supported				9.0* (9.0*)	7.9* (7.9*)	7.0* (7.0*)	6.3* (6.3*)	5.4 (5.7*)	4.5 (5.1*)	
7.5	non supported				(8.4)	(6.5)	(5.2)	(4.2)	(3.4)	(2.8)	
	4-pt. supported				9.3* (9.3*)	8.1* (8.1*)	7.2* (7.2*)	6.4* (6.4*)	5.3 (5.7*)	4.5 (5.1*)	
6	non supported			(10.7)	(8.0)	(6.2)	(4.9)	(4.0)	(3.3)	(2.7)	
	4-pt. supported			11.8* (11.8*)	9.8* (9.8*)	8.4* (8.4*)	7.3* (7.3*)	6.2 (6.5*)	5.2 (5.7*)	4.4 (5.1*)	
4.5	non supported	(17.0)	(13.7)	(9.8)	(7.4)	(5.8)	(4.7)	(3.9)	(3.2)	(2.7)	(2.2)
	4-pt. supported	22.0* (22.0*)	16.5* (16.5*)	12.6* (12.6*)	10.3* (10.3*)	8.6* (8.6*)	7.3 (7.4*)	6.0 (6.5*)	5.1 (5.7*)	4.4 (5.0*)	3.7 (4.2*)
3	non supported		(12.0)	(8.8)	(6.8)	(5.4)	(4.4)	(3.7)	(3.1)	(2.6)	(2.2)
	4-pt. supported		17.8 (17.8*)	13.3* (13.3*)	10.6* (10.6*)	8.6 (8.8*)	7.0 (7.5*)	5.9 (6.5*)	5.0 (5.7*)	4.3 (4.9*)	3.7 (4.0*)
1.5	non supported		(9.1*)	(8.0)	(6.3)	(5.1)	(4.2)	(3.5)	(3.0)	(2.5)	(2.2)
	4-pt. supported		9.1* (9.1*)	13.2 (13.5*)	10.2 (10.7*)	8.2 (8.8*)	6.7 (7.5*)	5.7 (6.4*)	4.8 (5.5*)	4.2 (4.7*)	3.7* (3.7*)
0	non supported		(6.9*)	(7.4)	(5.9)	(4.8)	(4.0)	(3.3)	(2.9)	(2.5)	(2.1)
	4-pt. supported		6.9* (6.9*)	12.6 (13.1*)	9.7 (10.5*)	7.9 (8.7*)	6.5 (7.3*)	5.5 (6.2*)	4.7 (5.3*)	4.1 (4.4*)	3.3* (3.3*)
-1.5	non supported		(6.9*)	(7.1)	(5.6)	(4.6)	(3.8)	(3.2)	(2.8)	(2.4)	
	4-pt. supported		6.9* (6.9*)	12.1* (12.1*)	9.4 (9.9*)	7.6 (8.2*)	6.4 (6.9*)	5.4 (5.8*)	4.7 (4.9*)	3.9* (3.9*)	
-3	non supported		(7.5*)	(6.9)	(5.4)	(4.4)	(3.7)	(3.2)	(2.7)	(2.4)	
	4-pt. supported		7.5* (7.5*)	10.7* (10.7*)	8.9* (8.9*)	7.5* (7.5*)	6.2* (6.2*)	5.3* (5.3*)	4.3* (4.3*)	3.2* (3.2*)	
-4.5	non supported			(6.9)	(5.4)	(4.4)	(3.7)	(3.1)	(2.7)		
	4-pt. supported			8.8* (8.8*)	7.6* (7.6*)	6.4* (6.4*)	5.4* (5.4*)	4.4* (4.4*)	3.4* (3.4*)		
-6	non supported					(4.4)	(3.7)				
	4-pt. supported					5.0* (5.0*)	4.1* (4.1*)				

Capacity values are stated in metric tons (t). The pump pressure is 360 bar (5,221 psi). The values, in accordance with ISO 10567, amount to 75% of the static tipping load or 87% of the hydraulic lifting force (marked *). They apply to slewing operations through 360° on a firm and level surface. Values in brackets apply to the longitudinal direction of the undercarriage. "Non-supported" values only apply when the load is hoisted above the front or rear axle. The weight of the attached hoisting equipment (quick attach, grab, magnet, load hook, etc.) must be deducted from the capacity values. Load holding valves on the lift cylinders and an overload warning device are required for crane operations.

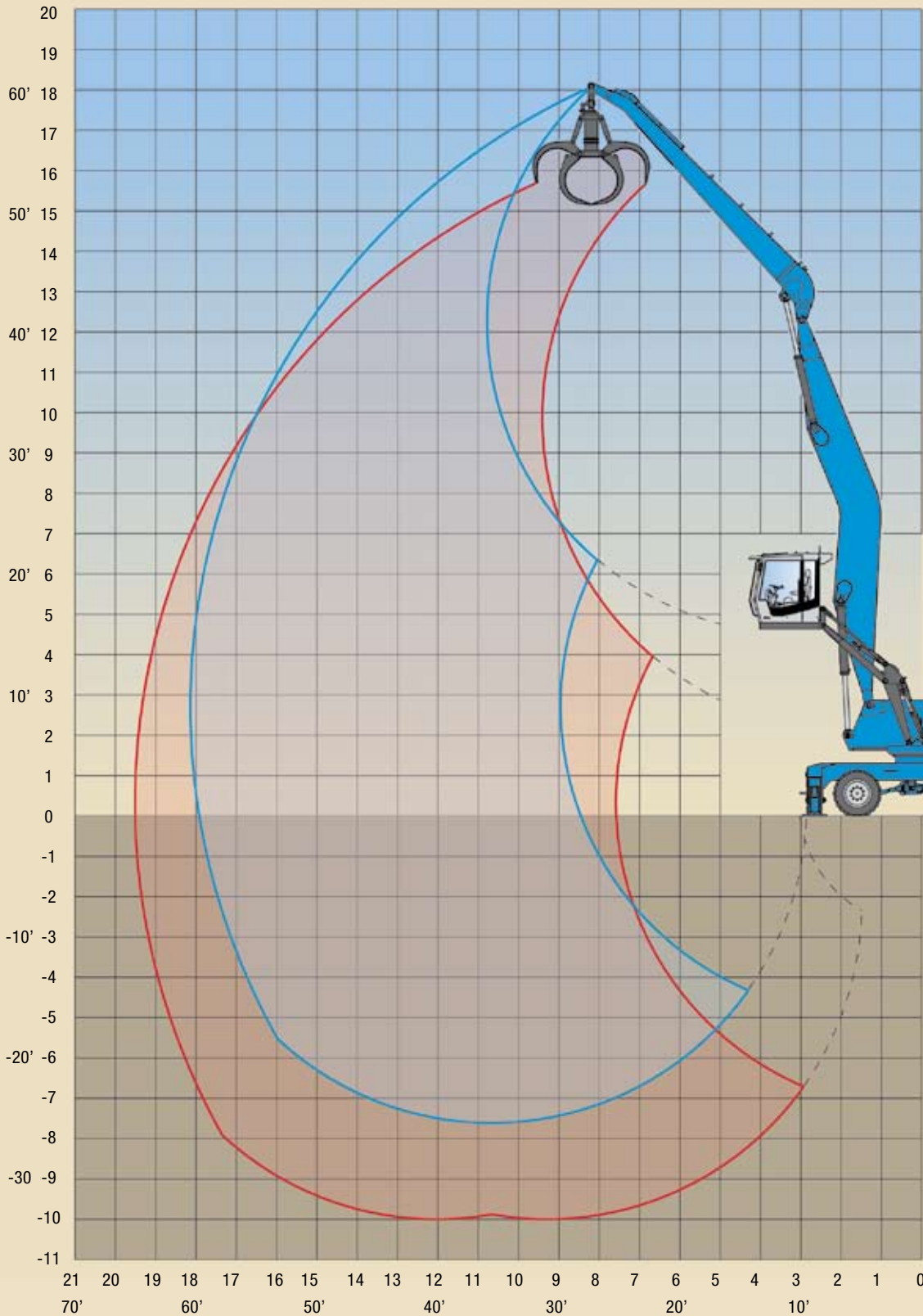
RECOMMENDED ATTACHMENTS

Loading system 18 m (59')

LOAD HOOK	20 t
Terex® FUCHS CACTUS GRAB 0.6 m³	Open or half-closed tines
Terex® FUCHS CACTUS GRAB 0.8 m³	Open or half-closed tines
Terex® FUCHS MAGNET PLATE MP 1350	dia. = 1,350 mm with magnet system 30 kW
CLAMSHELL GRAB 1.4 m³	Density of bulk material up to 1,600 kg/m³
CLAMSHELL GRAB 2.0 m³	Density of bulk material up to 800 kg/m³

WORKING DIAGRAM

MHL 360D REACH 18 m (59') - OFFSET BOOM



Work equipment:
offset boom 9.7 m (32'),
dipperstick 7.8 m (25.6')

◀ Reach in m and ft

LIFTING CAPACITY

MHL 360D REACH 18 m (59') - OFFSET BOOM

HEIGHT (m)	UNDERCARRIAGE STABILIZERS	REACH (m)										
		4.5	6	7.5	9	10.5	12	13.5	15	16.5	18	
15	non supported					(6.5*)	(5.3)					
	4-pt. supported					6.5* (6.5*)	5.5* (5.5*)					
13.5	non supported						(5.4)	(4.2)				
	4-pt. supported						5.9* (5.9*)	5.2* (5.2*)				
12	non supported						(5.5)	(4.3)	(3.4)			
	4-pt. supported						5.8* (5.8*)	5.4* (5.4*)	4.4* (4.4*)			
10.5	non supported						(5.4)	(4.3)	(3.4)			
	4-pt. supported						5.9* (5.9*)	5.4* (5.4*)	5.0* (5.0*)			
9	non supported					(6.6*)	(5.3)	(4.2)	(3.4)	(2.7)		
	4-pt. supported					6.6* (6.6*)	6.0* (6.0*)	5.5* (5.5*)	5.1* (5.1*)	4.4* (4.4*)		
7.5	non supported					(6.5)	(5.1)	(4.1)	(3.3)	(2.7)		
	4-pt. supported					6.8* (6.8*)	6.1* (6.1*)	5.6* (5.6*)	5.1* (5.1*)	4.4 (4.7*)		
6	non supported				(7.9)	(6.1)	(4.9)	(3.9)	(3.2)	(2.7)		
	4-pt. supported				8.3* (8.3*)	7.2* (7.2*)	6.4* (6.4*)	5.7* (5.7*)	5.1* (5.1*)	4.3 (4.7*)		
4.5	non supported	(17.0)	(13.7)	(9.7)	(7.3)	(5.7)	(4.6)	(3.8)	(3.1)	(2.6)	(2.1)	
	4-pt. supported	20.0* (20.0*)	14.0* (14.0*)	10.8* (10.8*)	8.9* (8.9*)	7.6* (7.6*)	6.6* (6.6*)	5.9* (5.9*)	5.0 (5.2*)	4.3 (4.7*)	3.6* (3.6*)	
3	non supported		(11.8)	(8.7)	(6.7)	(5.3)	(4.3)	(3.6)	(3.0)	(2.5)	(2.1)	
	4-pt. supported		15.7 (15.7*)	11.7* (11.7*)	9.4* (9.4*)	7.9* (7.9*)	6.8* (6.8*)	5.8 (6.0*)	4.9 (5.3*)	4.2 (4.7*)	3.6 (4.0*)	
1.5	non supported		(10.4*)	(7.8)	(6.1)	(4.9)	(4.1)	(3.4)	(2.8)	(2.4)	(2.1)	
	4-pt. supported		10.6* (10.6*)	12.4 (12.4*)	9.8* (9.8*)	8.0* (8.0*)	6.6 (6.9*)	5.6 (6.0*)	4.7 (5.3*)	4.1 (4.7*)	3.6 (4.0*)	
0	non supported		(7.8*)	(7.2)	(5.7)	(4.6)	(3.8)	(3.2)	(2.7)	(2.3)		
	4-pt. supported		7.8* (7.8*)	12.3 (12.6*)	9.6 (10.0*)	7.7 (8.2*)	6.4 (7.0*)	5.4 (6.0*)	4.6 (5.2*)	4.0 (4.5*)		
-1.5	non supported		(7.6*)	(6.8)	(5.4)	(4.4)	(3.7)	(3.1)	(2.7)	(2.3)		
	4-pt. supported		7.6* (7.6*)	11.9* (12.3*)	9.2 (9.9*)	7.5 (8.1*)	6.2 (6.9*)	5.3 (5.9*)	4.5 (5.1*)	4.0 (4.3*)		
-3	non supported		(7.9*)	(6.6)	(5.2)	(4.2)	(3.6)	(3.0)	(2.6)	(2.3)		
	4-pt. supported		7.9* (7.9*)	11.6* (11.6*)	9.0 (9.4*)	7.3 (7.8*)	6.1 (6.6*)	5.2 (5.6*)	4.5 (4.7*)	3.9* (3.9*)		
-4.5	non supported		(8.6*)	(6.6)	(5.1)	(4.2)	(3.5)	(3.0)	(2.6)			
	4-pt. supported		8.6* (8.6*)	10.4* (10.4*)	8.6* (8.6*)	7.2* (7.2*)	6.0* (6.0*)	5.1* (5.1*)	4.2* (4.2*)			
-6	non supported		(9.3*)	(6.7)	(5.2)	(4.2)	(3.5)	(3.0)	(2.7)			
	4-pt. supported		9.3* (9.3*)	8.9* (8.9*)	7.5* (7.5*)	6.3* (6.3*)	5.3* (5.3*)	4.4* (4.4*)	3.3* (3.3*)			

Capacity values are stated in metric tons (t). The pump pressure is 360 bar (5,221 psi). The values, in accordance with ISO 10567, amount to 75% of the static tipping load or 87% of the hydraulic lifting force (marked *). They apply to slewing operations through 360° on a firm and level surface. Values in brackets apply to the longitudinal direction of the undercarriage. "Non-supported" values only apply when the load is hoisted above the front or rear axle. The weight of the attached hoisting equipment (quick attach, grab, magnet, load hook, etc.) must be deducted from the capacity values. Load holding valves on the lift cylinders and an overload warning device are required for crane operations.

RECOMMENDED ATTACHMENTS

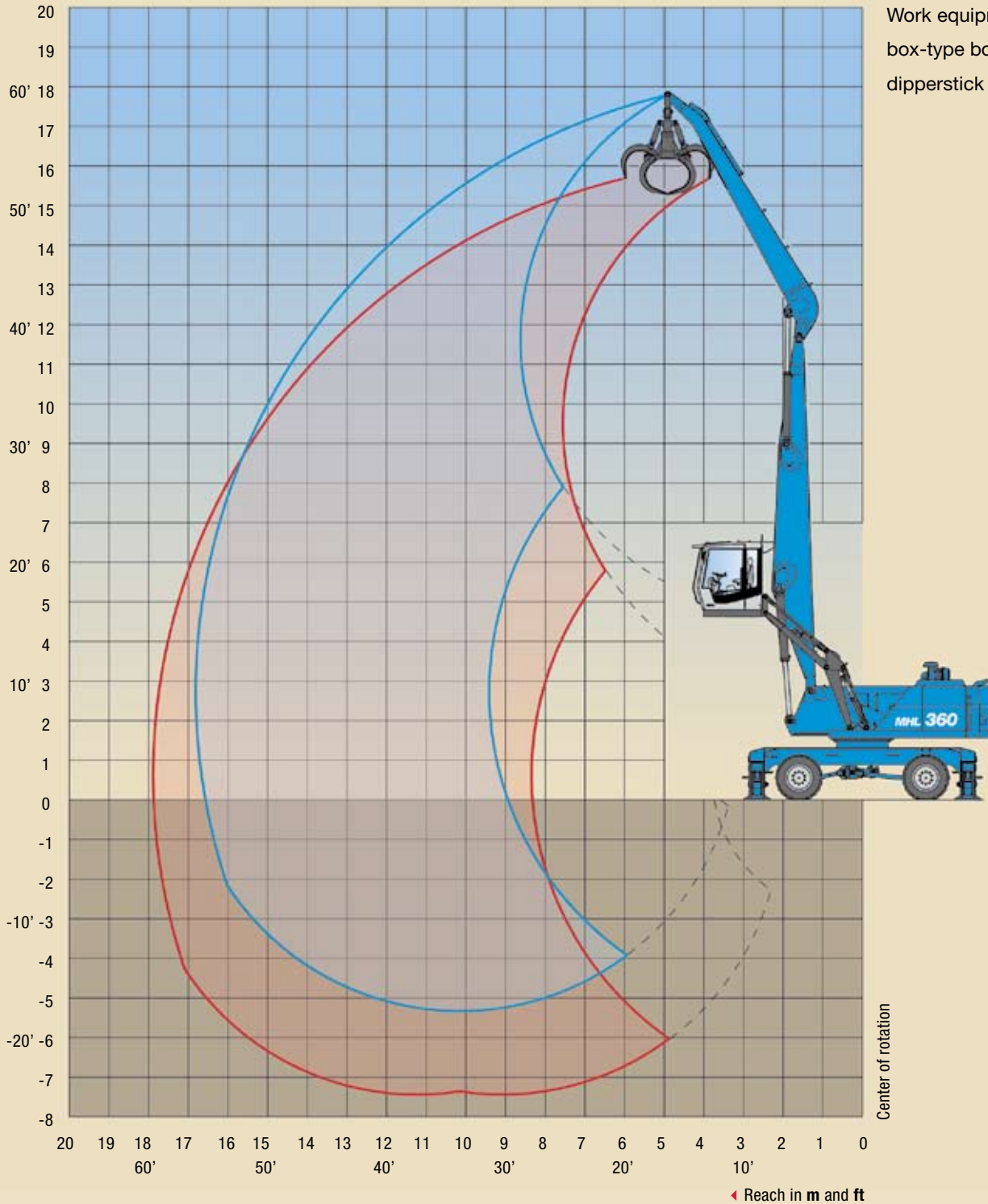
Loading system 18 m (59') - offset boom

LOAD HOOK	20 t
Terex® FUCHS CACTUS GRAB 0.6 m³	Open or half-closed tines
Terex® FUCHS CACTUS GRAB 0.8 m³	Open or half-closed tines
Terex® FUCHS MAGNET PLATE MP 1250	dia. = 1,250 mm with magnet system 20 kW
CLAMSHELL GRAB 1.4 m³	Density of bulk material up to 1,600 kg/m ³
CLAMSHELL GRAB 2.0 m³	Density of bulk material up to 800 kg/m ³

WORKING DIAGRAM

MHL 360D REACH 16.5 m (54')

Work equipment:
box-type boom 8.9 m (29'),
dipperstick 7 m (23')



LIFTING CAPACITY

MHL 360D REACH 16.5 m (54')

HEIGHT (m)	UNDERCARRIAGE STABILIZERS	REACH (m)								
		4.5	6	7.5	9	10.5	12	13.5	15	16.5
15	non supported				(8.4*)	(5.8*)				
	4-pt. supported				8.4* (8.4*)	5.8* (5.8*)				
13.5	non supported				(8.7)	(6.7)	(5.2)			
	4-pt. supported				9.3* (9.3*)	8.3* (8.3*)	5.8* (5.8*)			
12	non supported				(8.8)	(6.8)	(5.3)	(4.2)		
	4-pt. supported				9.2* (9.2*)	8.2* (8.2*)	7.5* (7.5*)	5.0* (5.0*)		
10.5	non supported				(8.8)	(6.8)	(5.3)	(4.3)		
	4-pt. supported				9.2* (9.2*)	8.2* (8.2*)	7.4* (7.4*)	6.5 (6.7*)		
9	non supported				(8.6)	(6.7)	(5.3)	(4.3)	(3.4)	
	4-pt. supported				9.4* (9.4*)	8.3* (8.3*)	7.5* (7.5*)	6.4 (6.7*)	5.3 (5.6*)	
7.5	non supported			(11.2*)	(8.4)	(6.5)	(5.2)	(4.2)	(3.4)	
	4-pt. supported			11.2* (11.2*)	9.7* (9.7*)	8.5* (8.5*)	7.6* (7.6*)	6.4 (6.8*)	5.2 (6.0*)	
6	non supported		(14.8*)	(10.6)	(8.0)	(6.2)	(5.0)	(4.1)	(3.4)	
	4-pt. supported		14.8* (14.8*)	12.2* (12.2*)	10.2* (10.2*)	8.8* (8.8*)	7.6 (7.7*)	6.3 (6.8*)	5.2 (6.0*)	
4.5	non supported	(17.0)	(13.8)	(9.9)	(7.5)	(5.9)	(4.8)	(3.9)	(3.3)	(2.7)
	4-pt. supported	24.0* (24.0*)	17.0* (17.0*)	13.1* (13.1*)	10.7* (10.7*)	9.0* (9.0*)	7.4 (7.8*)	6.1 (6.8*)	5.2 (6.0*)	4.4 (4.8*)
3	non supported		(12.3)	(9.0)	(7.0)	(5.6)	(4.6)	(3.8)	(3.2)	(2.7)
	4-pt. supported		18.4* (18.4*)	13.8* (13.8*)	10.9* (10.9*)	8.7 (9.2*)	7.1 (7.9*)	6.0 (6.8*)	5.1 (5.8*)	4.4 (4.8*)
1.5	non supported		(11.1*)	(8.3)	(6.5)	(5.3)	(4.4)	(3.7)	(3.1)	(2.7)
	4-pt. supported		12.2* (12.2*)	13.6 (14.0*)	10.4* (11.2*)	8.4 (9.2*)	6.9 (7.8*)	5.8 (6.7*)	5.0 (5.6*)	4.3 (4.4*)
0	non supported		(9.1*)	(7.8)	(6.2)	(5.0)	(4.2)	(3.5)	(3.0)	(2.7)
	4-pt. supported		9.1* (9.1*)	13.0 (13.6*)	10.0 (10.9*)	8.1 (9.0*)	6.7 (7.5*)	5.7 (6.4*)	4.9 (5.2*)	3.8* (3.8*)
-1.5	non supported		(8.9*)	(7.5)	(6.0)	(4.9)	(4.1)	(3.5)	(3.0)	
	4-pt. supported		8.9* (8.9*)	12.6* (12.6*)	9.8 (10.2*)	7.9 (8.5*)	6.6 (7.0*)	5.6 (5.8*)	4.6* (4.6*)	
-3	non supported		(9.6*)	(7.4)	(5.8)	(4.8)	(4.0)	(3.4)	(3.0)	
	4-pt. supported		9.6* (9.6*)	10.9* (10.9*)	9.1* (9.1*)	7.5* (7.5*)	6.2* (6.2*)	5.0* (5.0*)	3.6* (3.6*)	
-4.5	non supported			(7.5)	(5.8)	(4.8)	(4.0)			
	4-pt. supported			8.7* (8.7*)	7.4* (7.4*)	6.2* (6.2*)	5.0* (5.0*)			

Capacity values are stated in metric tons (t). The pump pressure is 360 bar (5,221 psi). The values, in accordance with ISO 10567, amount to 75% of the static tipping load or 87% of the hydraulic lifting force (marked *). They apply to slewing operations through 360° on a firm and level surface. Values in brackets apply to the longitudinal direction of the undercarriage. "Non-supported" values only apply when the load is hoisted above the front or rear axle. The weight of the attached hoisting equipment (quick attach, grab, magnet, load hook, etc.) must be deducted from the capacity values. Load holding valves on the lift cylinders and an overload warning device are required for crane operations.

RECOMMENDED ATTACHMENTS

Loading system 16.5 m (54')

LOAD HOOK	20 t
Terex® FUCHS CACTUS GRAB 0.6 m³	Open or half-closed tines
Terex® FUCHS CACTUS GRAB 0.8 m³	Open or half-closed tines
Terex® FUCHS CACTUS GRAB 1.0 m³	Open or half-closed tines
Terex® FUCHS MAGNET PLATE MP 1350	dia. = 1,350 mm with magnet system 30 kW
CLAMSHELL GRAB 1.4 m³	Density of bulk material up to 1,600 kg/m³
CLAMSHELL GRAB 2.0 m³	Density of bulk material up to 800 kg/m³