

## Log Handler

<b>ENGINE POWER</b>	221 hp (165 kW)
<b>OPERATING WEIGHT</b>	74,449 – 75,287 lbs (33,770 – 34,150 kg)
<b>MAX REACH</b>	49' 2" (15m)
<b>MAX LIFTING CAPACITY</b>	32,630 – 41,910 lbs (14,800 – 19,000 kg)



### Specifications

Diesel Engine	
Manufacturer and type	Deutz-BF6M 1013 FC
Design	6-cylinder turbocharged and charge air cooler.
Engine output	221 HP (165 kW)
Nominal speed	2,000 rpm
Displacement	433 in <sup>3</sup> (7.1 L)
Cooling system	Liquid cooling, thermostatically controlled and charge air cooling.
Emission standards	COM II and TIER II
Air filter design	Two-stage filter with safety valve.
Fuel tank	92 US gal (350 L)

Operating Weights	
Basic machine including work attachment	
Reach 41' (12.5 m)	74,449 lbs (33,770 kg)
Reach 44' 3" (13.5 m)	74,559 lbs (33,820 kg)
Reach 49' 2" (15.0 m)	75,287 lbs (34,150 kg)

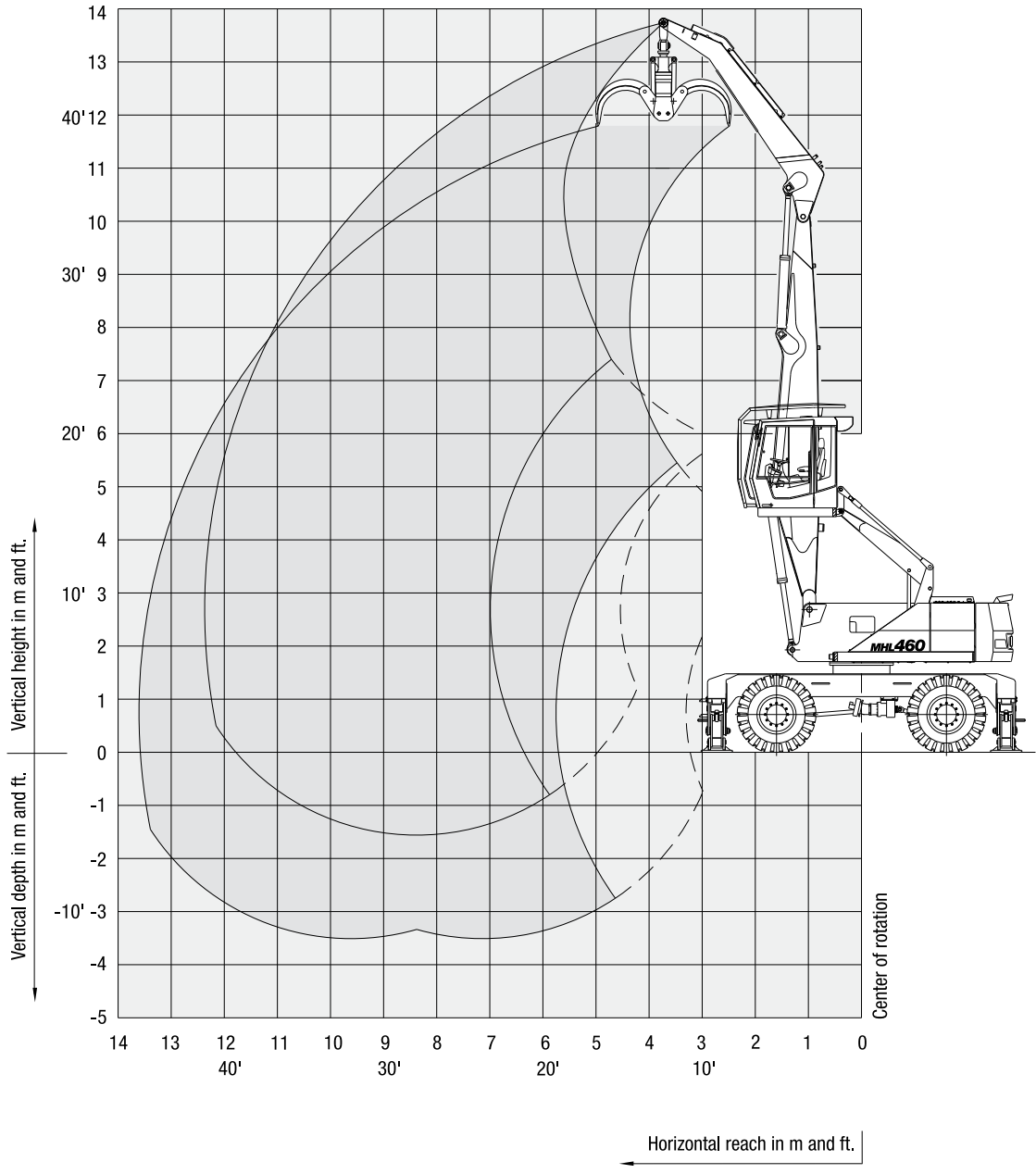
Electrical System	
Operating voltage	24 V
Batteries	2 x 12 V / 100 Ah / 760 A (accord. to EN)
Lighting set	2 uppercarriage-mounted headlamps, 2 Xenon-dipperstick-mounted working floodlights, 3 Xenon-cabin-mounted working floodlights, rear-/turn signal lamps.

Swing System	
Ring gear	Internally toothed ring gear.
Drive	Multi-stage planetary gear with integr. multi-disc brake.
Upper carriage swing speed	0 – 8 rpm

Travel Drive	
Hydrostatic drive through infinitely variable axial piston motor and directly mounted travel brake valves, 2-speed switch gear, 4-wheel drive.	
Travel speed 1st gear	0 – 3.7 mph (0 – 6 km/h)
Travel speed 2nd gear	0 – 12.4 mph (0 – 20 km/h)
Turning radius	31' 2" (9.5 m)

**Working Range Diagram**

**MHL 460 reach 41' (12.5 m)**  
 Work equipment: box-type boom 24' 2" (7.4 m), dipperstick 14' 7" (4.5 m)



**Lifting Capacities**

**MHL 460 reach 41' (12.5 m)** (Lifting capacities in lbs.)

Work equipment: box-type boom 24' 2" (7.4 m), dipperstick 14' 7" (4.5 m)

Height in feet	Undercarriage stabilizers	Reach in feet					
		15'	20'	25'	30'	35'	40'
40'	non supported		(22,120*)	(16,570)			
	4-point supported		22,120* (22,120*)	16,590* (16,590*)			
35'	non supported		(20,960*)	(16,930)		(12,520)	
	4-point supported		20,960* (20,960*)	18,740* (18,740*)	16,540* (16,540*)		
30'	non supported		(21,160*)	(16,880)		(12,590)	
	4-point supported		21,160* (21,620*)	18,710* (18,710*)	17,010* (17,010*)		
25'	non supported		(22,620*)	(16,550)		(12,430)	(9,690)
	4-point supported		22,620* (22,620*)	19,480* (19,480*)	17,320* (17,320*)		14,810 (15,750*)
20'	non supported	(33,050*)	(22,530)	(15,990)		(12,110)	(9,540)
	4-point supported	33,050* (33,050*)	25,290* (25,290*)	20,890* (20,890*)	18,050* (18,050*)		14,650 (16,030*)
15'	non supported	(32,760)	(21,180)	(15,280)		(11,710)	(7,590)
	4-point supported	41,030* (41,030*)	28,740* (28,740*)	22,640* (22,640*)	18,160 (18,960*)	14,410 (16,440*)	11,780 (14,470*)
10'	non supported		(19,850)	(14,570)		(11,300)	(7,480)
	4-point supported		31,770* (31,770*)	23,210 (24,230*)	17,710 (19,790*)	14,150 (16,790*)	11,660 (14,420*)
5'	non supported	(8,660*)	(18,950)	(14,010)		(10,950)	(7,380)
	4-point supported	8,660* (8,660*)	31,820 (33,020*)	22,580 (25,100*)	17,330 (20,220*)	13,930 (16,860*)	11,560 (14,070*)
0'	non supported		(18,560)	(13,670)		(10,720)	(8,740)
	4-point supported		28,990* (28,990*)	22,210 (24,830*)	17,080 (19,960*)	13,780 (16,380*)	
-5'	non supported					(10,640)	
	4-point supported				16,980 (18,710*)		

**MHL 460 reach 41' (12.5 m)** (Lifting capacities in metric tonnes)

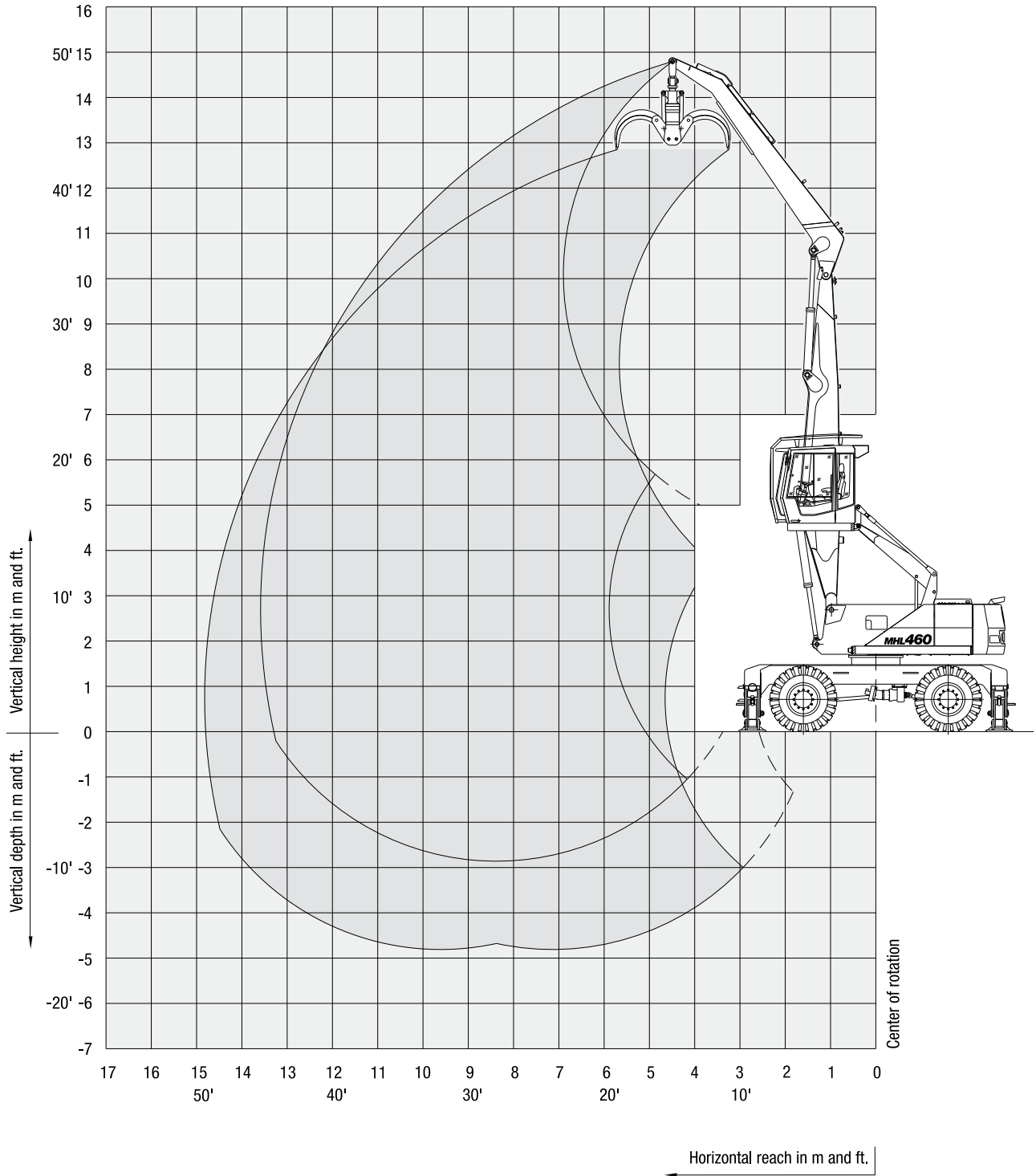
Work equipment: box-type boom 24' 2" (7.4 m), dipperstick 14' 7" (4.5 m)

Height in meters	Undercarriage stabilizers	Reach in meters					
		4.5	6	7.5	9	10.5	12
12	non supported		(10.0*)	(7.5)			
	4-point supported		10.0* (10.0*)	9.0* (9.0*)			
10.5	non supported		(9.5*)	(7.6)		(5.6)	
	4-point supported		9.5* (9.5*)	8.4* (8.4*)	7.8* (7.8*)		
9	non supported		(9.6*)	(7.6)		(5.7)	
	4-point supported		9.6* (9.6*)	8.4* (8.4*)	7.7* (7.7*)		
7.5	non supported		(10.2*)	(7.5)		(5.6)	(4.4)
	4-point supported		10.2* (10.2*)	8.8* (8.8*)	7.8* (7.8*)	6.7 (7.1*)	
6	non supported	(14.9*)	(10.2)	(7.2)		(5.4)	(4.3)
	4-point supported	14.9* (14.9*)	11.4* (11.4*)	9.4* (9.4*)	8.1* (8.1*)	6.6 (7.2*)	
4.5	non supported	(14.8)	(9.6)	(6.9)		(5.3)	(3.4)
	4-point supported	18.6* (18.6*)	13.0* (13.0*)	10.2* (10.2*)	8.2 (8.6*)	6.5 (7.4*)	5.3 (6.5*)
3	non supported		(9.0)	(6.6)		(5.1)	(3.3)
	4-point supported		14.4* (14.4*)	10.5 (10.9*)	8.0 (8.9*)	6.4 (7.6*)	5.2 (6.5*)
1.5	non supported	(3.9*)	(8.6)	(6.3)		(4.9)	(3.3)
	4-point supported	3.9* (3.9*)	14.4 (14.9*)	10.2 (11.3*)	7.8 (9.1*)	6.3 (7.6*)	5.2 (6.3*)
0	non supported		(8.4)	(6.2)		(4.8)	(3.9)
	4-point supported		13.1* (13.1*)	10.0 (11.2*)	7.7 (9.0*)	6.2 (7.4*)	
-1.5	non supported					(4.8)	
	4-point supported				7.7 (8.4*)		

The pump pressure for these tables is 5,220 psi. The values amount to 75% of the static tipping load or 87% of the hydraulic lifting force (marked \*), in accordance with ISO 10567. When the machine is standing on solid and level ground, these values apply to slewing operations through 360°. The values in brackets apply in the lengthwise direction of the undercarriage. The "unsupported" values apply only when the load is hoisted above the front or rear axle. The weight of the attached load hoisting implement (grab, load hook, etc.) must be deducted from the carrying capacity values.

**Working Range Diagram**

**MHL 460 reach 44'-3" (13.5 m)**  
 Work equipment: box-type boom 24' 2" (7.4 m), dipperstick 19' (5.8 m)



**Lifting Capacities**

**MHL 460 reach 44'-3" (13.5 m)** (Lifting capacities in lbs.)

Work equipment: box-type boom 24' 2" (7.4 m), dipperstick 19' (5.8 m)

Height in feet	Undercarriage stabilizers	Reach in feet						
		15'	20'	25'	30'	35'	40'	45'
40'	non supported			(16,910*)	(12,990)			
	4-point supported			16,910* (16,910*)	13,870* (13,870*)			
35'	non supported			(16,240*)	(13,200)	(10,160)		
	4-point supported			16,240* (16,240*)	15,260* (15,260*)	12,780* (12,780*)		
30'	non supported			(16,350*)	(13,180)	(10,220)	(8,150)	
	4-point supported			16,350* (16,350*)	15,220* (15,220*)	14,320* (14,320*)	12,340 (13,000*)	
25'	non supported			(17,170*)	(12,980)	(10,120)	(8,080)	
	4-point supported			17,170* (17,170*)	15,690* (15,690*)	14,500* (14,500*)	12,310 (13,550*)	
20'	non supported		(21,570*)	(16,770)	(12,630)	(9,910)	(7,980)	
	4-point supported		21,570* (21,570*)	18,650* (18,650*)	16,550* (16,550*)	14,970* (14,970*)	12,200 (13,710*)	
15'	non supported	(33,380*)	(22,490)	(16,010)	(12,170)	(9,630)	(7,820)	(6,390)
	4-point supported	33,380* (33,380*)	25,190* (25,190*)	20,610* (20,610*)	17,670* (17,670*)	14,750 (15,590*)	12,030 (13,990*)	10,140 (12,560*)
10'	non supported	(32,210)	(20,930)	(15,170)	(11,670)	(9,320)	(7,640)	(6,170)
	4-point supported	41,910* (41,910*)	29,060* (29,060*)	22,670* (22,670*)	18,120 (18,827*)	14,420 (16,220*)	11,840 (14,260*)	9,920 (12,340*)
5'	non supported	(15,790*)	(19,600)	(14,410)	(11,210)	(9,040)	(7,470)	(6,170)
	4-point supported	15,790* (15,790*)	31,900* (31,900*)	23,040 (24,290*)	17,620 (19,740*)	14,110 (16,680*)	11,660 (14,370*)	9,700 (12,120*)
0'	non supported	(14,140*)	(18,780)	(13,860)	(10,850)	(8,810)	(7,340)	(6,390)
	4-point supported	14,140* (14,140*)	31,630 (32,860*)	22,420 (25,010*)	17,220 (20,130*)	13,860 (16,770*)	11,520 (14,140*)	9,920 (11,900*)
-5'	non supported		(18,410)	(13,550)	(10,630)	(8,670)	(7,280)	
	4-point supported		30,990* (30,990*)	22,080 (24,580*)	16,980 (19,760*)	13,710 (16,260*)	11,450 (13,310*)	

**MHL 460 reach 44'-3" (13.5 m)** (Lifting capacities in metric tonnes)

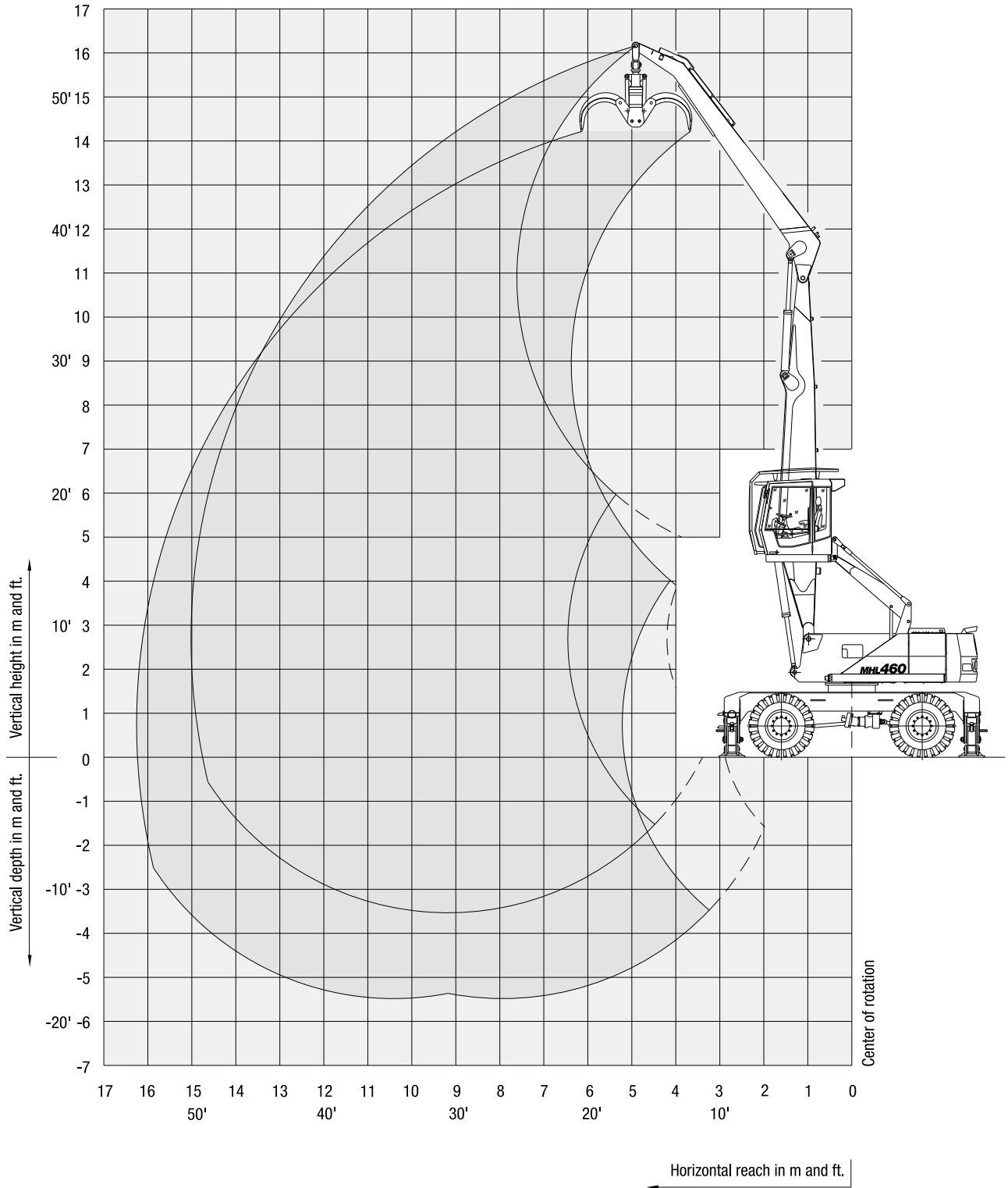
Work equipment: box-type boom 24' 2" (7.4 m), dipperstick 19' (5.8 m)

Height in meters	Undercarriage stabilizers	Reach in meters						
		4.5	6	7.5	9	10.5	12	13.5
12	non supported			(7.6*)	(5.8)			
	4-point supported			7.6* (7.6*)	7.2* (7.2*)			
10.5	non supported			(7.3*)	(5.9)	(4.6)		
	4-point supported			7.3* (7.3*)	6.9* (6.9*)	6.6* (6.6*)		
9	non supported			(7.4*)	(5.9)	(4.6)	(3.7)	
	4-point supported			7.4* (7.4*)	6.9* (6.9*)	6.4* (6.4*)	5.6 (5.9*)	
7.5	non supported			(7.7*)	(5.8)	(4.5)	(3.6)	
	4-point supported			7.7* (7.7*)	7.1* (7.1*)	6.5* (6.5*)	5.5 (6.1*)	
6	non supported		(9.7*)	(7.6)	(5.7)	(4.4)	(3.6)	
	4-point supported		9.7* (9.7*)	8.4* (8.4*)	7.5* (7.5*)	6.7* (6.7*)	5.5 (6.2*)	
4.5	non supported	(15.1*)	(10.2)	(7.2)	(5.5)	(4.3)	(3.5)	(2.9)
	4-point supported	15.1* (15.1*)	11.4* (11.4*)	9.3* (9.3*)	8.0* (8.0*)	6.6 (7.0*)	5.4 (6.3*)	4.6 (5.7*)
3	non supported	(14.6)	(9.4)	(6.8)	(5.2)	(4.2)	(3.4)	(2.8)
	4-point supported	19.0* (19.0*)	13.1* (13.1*)	10.2* (10.2*)	8.2 (8.5*)	6.5 (7.3*)	5.3 (6.4*)	4.5 (5.6*)
1.5	non supported	(7.1*)	(8.8)	(6.5)	(5.0)	(4.1)	(3.3)	(2.8)
	4-point supported	7.1* (7.1*)	14.4* (14.4*)	10.4 (11.0*)	7.9 (8.9*)	6.3 (7.5*)	5.2 (6.5*)	4.4 (5.5*)
0	non supported	(6.4*)	(8.5)	(6.2)	(4.9)	(3.9)	(3.3)	(2.9)
	4-point supported	6.4* (6.4*)	14.3 (14.9*)	10.1 (11.3*)	7.8 (9.1*)	6.2 (7.6*)	5.2 (6.4*)	4.5 (5.4*)
-1.5	non supported		(8.3)	(6.1)	(4.8)	(3.9)	(3.3)	
	4-point supported		14.0* (14.0*)	10.0 (11.1*)	7.7 (8.9*)	6.2 (7.3*)	5.1 (6.0*)	

The pump pressure for these tables is 5,220 psi. The values amount to 75% of the static tipping load or 87% of the hydraulic lifting force (marked \*), in accordance with ISO 10567. When the machine is standing on solid and level ground, these values apply to slewing operations through 360°. The values in brackets apply in the lengthwise direction of the undercarriage. The "unsupported" values apply only when the load is hoisted above the front or rear axle. The weight of the attached load hoisting implement (grab, load hook, etc.) must be deducted from the carrying capacity values.

**Working Range Diagram**

**MHL 460 reach 49'-2" (15.0 m)**  
 Work equipment: box-type boom 26' 9" (8.2 m), dipperstick 21' 3" (6.5 m)



**Lifting Capacities**

**MHL 460 reach 49'-2" (15.0 m)** (Lifting capacities in lbs.)

Work equipment: box-type boom 26' 9" (8.2 m), dipperstick 21' 3" (6.5 m)

Height in feet	Undercarriage stabilizers	Reach in feet							
		15'	20'	25'	30'	35'	40'	45'	50'
45'	non supported			(15,820*)	(13,200)				
	4-point supported			15,820* (15,820*)	14,640* (14,640*)				
40'	non supported				(13,490)	(10,320)			
	4-point supported				13,940* (13,940*)	13,140* (13,140*)			
35'	non supported				(13,530)	(10,410)	(8,170)		
	4-point supported				13,760* (13,760*)	12,880* (12,880*)	12,200* (12,200*)		
30'	non supported			(15,260*)	(13,380)	(10,330)	(8,170)	(6,520)	
	4-point supported			15,260* (15,260*)	13,990* (13,990*)	12,960* (12,960*)	12,130* (12,130*)	10,120 (13,340*)	
25'	non supported			(16,090*)	(13,000)	(9,920)	(7,930)	(6,390)	
	4-point supported			16,090* (16,090*)	14,550* (14,550*)	13,230* (13,230*)	12,120* (12,120*)	9,920 (11,240*)	
20'	non supported		(20,720*)	(16,750)	(12,340)	(9,700)	(7,710)	(6,390)	
	4-point supported		20,720* (20,720*)	17,640* (17,640*)	15,430* (15,430*)	13,670* (13,670*)	11,900 (12,560*)	9,920 (11,460*)	
15'	non supported	(32,630*)	(22,050)	(15,650)	(11,900)	(9,260)	(7,490)	(6,170)	
	4-point supported	32,630* (32,630*)	24,250* (24,250*)	19,400* (19,400*)	16,530* (16,530*)	14,330* (14,330*)	11,680 (12,780*)	9,700 (11,680*)	
10'	non supported	(30,870)	(20,060)	(14,550)	(11,240)	(8,820)	(7,270)	(5,950)	(5,070)
	4-point supported	31,310* (31,310*)	27,780* (27,780*)	21,380* (21,380*)	17,640* (17,640*)	13,890 (14,990*)	11,460 (13,230*)	9,480 (11,680*)	8,150 (10,360*)
5'	non supported	(10,800*)	(18,520)	(13,670)	(10,580)	(8,370)	(7,050)	(5,730)	(5,070)
	4-point supported	10,800* (10,800*)	30,200* (30,200*)	22,270 (22,930*)	16,970 (18,520*)	13,450 (15,650*)	11,240 (13,450*)	9,480 (11,680*)	8,150 (10,140*)
0'	non supported	(10,360*)	(17,410)	(12,780)	(10,140)	(8,150)	(6,380)	(5,730)	
	4-point supported	10,360* (10,360*)	24,470* (24,470*)	21,380 (23,590*)	16,310 (18,960*)	13,230 (15,870*)	11,020 (13,450*)	9,260 (11,460*)	
-5'	non supported	(11,900*)	(16,970*)	(12,340)	(9,700)	(7,930)	(6,610)	(5,730)	
	4-point supported	11,900* (11,900*)	21,820* (21,820*)	20,940 (23,370*)	16,090 (18,740*)	13,000 (15,650*)	10,800 (13,000*)	9,260 (11,020*)	

**MHL 460 reach 49'-2" (15.0 m)** (Lifting capacities in metric tonnes)

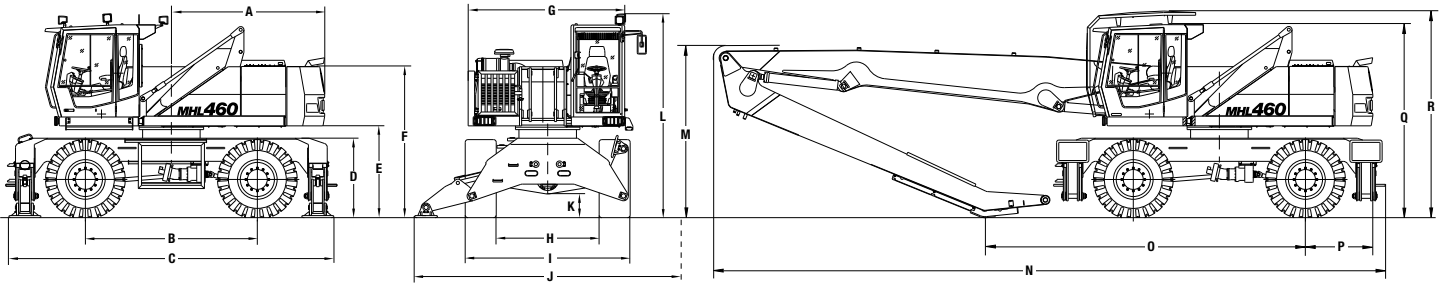
Work equipment: box-type boom 26' 9" (8.2 m), dipperstick 21' 3" (6.5 m)

Height in meters	Undercarriage stabilizers	Reach in meters							
		4.5	6	7.5	9	10.5	12	13.5	15
13.5	non supported			(7.1*)	(5.9)				
	4-point supported			7.1* (7.1*)	6.6* (6.6*)				
12	non supported				(6.1)	(4.6)			
	4-point supported				6.3* (6.3*)	5.9* (5.9*)			
10.5	non supported				(6.1)	(4.7)	(3.7)		
	4-point supported				6.2* (6.2*)	5.8* (5.8*)	5.5* (5.5*)		
9	non supported			(6.9*)	(6.0)	(4.6)	(3.7)	(2.9)	
	4-point supported			6.9* (6.9*)	6.3* (6.3*)	5.8* (5.8*)	5.5* (5.5*)	4.5 (5.1*)	
7.5	non supported			(7.3*)	(5.9)	(4.5)	(3.6)	(2.9)	
	4-point supported			7.3* (7.3*)	6.6* (6.6*)	6.0* (6.0*)	5.5* (5.5*)	4.5 (5.1*)	
6	non supported		(9.4*)	(7.6)	(5.6)	(4.4)	(3.5)	(2.9)	
	4-point supported		9.4* (9.4*)	8.0* (8.0*)	7.0* (7.0*)	6.2* (6.2*)	5.4 (5.7*)	4.5 (5.2*)	
4.5	non supported	(14.8*)	(10.0)	(7.1)	(5.4)	(4.2)	(3.4)	(2.8)	
	4-point supported	14.8* (14.8*)	11.0* (11.0*)	8.8* (8.8*)	7.5* (7.5*)	6.5* (6.5*)	5.3 (5.8*)	4.4 (5.3*)	
3	non supported	(14.0)	(9.1)	(6.6)	(5.1)	(4.0)	(3.3)	(2.7)	(2.3)
	4-point supported	14.2* (14.2*)	12.6* (12.6*)	9.7* (9.7*)	8.0* (8.0*)	6.3 (6.8*)	5.2 (6.0*)	4.3 (5.3*)	3.7 (4.7*)
1.5	non supported	(4.9*)	(8.4)	(6.2)	(4.8)	(3.8)	(3.2)	(2.6)	(2.3)
	4-point supported	4.9* (4.9*)	13.7* (13.7*)	10.1 (10.4*)	7.7 (8.4*)	6.1 (7.1*)	5.1 (6.1*)	4.3 (5.3*)	3.7 (4.6*)
0	non supported	(4.7*)	(7.9)	(5.8)	(4.6)	(3.7)	(3.1)	(2.6)	
	4-point supported	4.7* (4.7*)	11.1* (11.1*)	9.7 (10.7*)	7.4 (8.6*)	6.0 (7.2*)	5.0 (6.1*)	4.2 (5.2*)	
-1.5	non supported	(5.4*)	(7.7*)	(5.6)	(4.4)	(3.6)	(3.0)	(2.6)	
	4-point supported	5.4* (5.4*)	9.9* (9.9*)	9.5 (10.6*)	7.3 (8.5*)	5.9 (7.1*)	4.9 (5.9*)	4.2 (5.0*)	

The pump pressure for these tables is 5,220 psi. The values amount to 75% of the static tipping load or 87% of the hydraulic lifting force (marked \*), in accordance with ISO 10567. When the machine is standing on solid and level ground, these values apply to slewing operations through 360°. The values in brackets apply in the lengthwise direction of the undercarriage. The "unsupported" values apply only when the load is hoisted above the front or rear axle. The weight of the attached load hoisting implement (grab, load hook, etc.) must be deducted from the carrying capacity values.

# MHL 460

## Dimensions/Transport Dimensions



### Dimensions

<b>A</b>	112" (2,850 mm)	<b>G</b>	115" (2,915 mm)
<b>B</b>	126" (3,200 mm)	<b>H</b>	75" (1,915 mm)
<b>C</b>	238" (6,050 mm)	<b>I</b>	118" (3,000 mm)
<b>D</b>	58" (1,480 mm)	<b>J</b>	195" (4,955 mm)
<b>E</b>	67" (1,708 mm)	<b>K</b>	16" (410 mm)
<b>F</b>	111" (2,812 mm)	<b>L</b>	149" (3,790 mm)

### Superstructure

**Front axle:** Oscillating steering axle in planetary gear design with oscillating axle lock and integrated multi-disc brake, max. steering angle 30°.

**Rear axle:** Rigid mounted planetary gear axle with integr. multi-drum disc.

Stabilizers 4-point stabilizers

Tires Pneumatic 20.5 R 25

Option Trailer hitch for permissible trailer weights of max. 300 kN (67,440 lbs) (depending on hitch type).

### Brake System

Service brake Hydraulic braking system acting on all four wheel pairs.

Parking brake Electro-hydraulic braking system on gear box acting on both front and rear axle.

### Hydraulic System

Single circuit hydraulic system with flow-on-demand control, optimal use of the available engine output through power management control.

Separate oil cooler with large cooling surface, temperature controlled fan speed.

Hydraulic oil filter integrated in the oil tank.

Central lubricating system as standard.

Max. pump capacity 169 US gal/min (640 L/min) @ 2,000 rpm

Max. operating pressure 5,221 psi (360 bar)

Hydraulic oil tank 100 US gal (380 L)

### Transport Dimensions

	Maximum Reach		
	41' (12.5 m)	44' 3" (13.5 m)	49' 9" (15.0 m)
<b>M</b>	125" (3,175 mm)	126" (3,200 mm)	126" (3,200 mm)
<b>N</b>	460" (11,690 mm)	456" (11,580 mm)	492" (12,490 mm)
<b>O</b>	275" (6,990 mm)	234" (5,955 mm)	235" (5,960 mm)
<b>P</b>	49" (1,250 mm)	49" (1,250 mm)	49" (1,250 mm)
<b>Q</b>	142" (3,610 mm)	142" (3,610 mm)	142" (3,610 mm)
<b>R</b>	151" (3,840 mm)	151" (3,840 mm)	151" (3,840 mm)

### Logging Grabs

Capacity up to 2.2 yd<sup>3</sup> (1.7 m<sup>3</sup>) optional, according to job-site conditions.

1.25 cord pulp wood grab.

Bypass grapples to suit long wood handling.

### Safety Equipment

Protection of cab ensured by work equipment operating range limit.

### Cab

**Cab:** ergonomically shaped driver's cab with functional design and excellent all-round visibility, infinitely variable hydraulically height-adjustable with maximum eye-level of 19' (5.8 m)

**Driver's seat:** air-cushioned comfort seat with pneumatically adjustable lumbar support, safety belt and integrated headrest, seat heating available on request. Seat position, seat inclination and seat cushion multi-adjustable in line with position of armrests and pilot control units, allowing fatigue-free operations.

**Steering post:** forward, back and height adjustable.

Infinitely variable hot water heating with 3-speed fan, 4 adjustable defroster nozzles.

Air conditioning and stereo cassette radio standard.

Up and over type front windshield with pull-down sunblind, lift-up skylight on cab roof.

**Options:** Full cab guard, bulletproof glass, seat heating, travel alarm.

Acoustic power level (guaranteed) L<sub>WA</sub>= 106 dB(A).



### TEREX Fuchs

8800 Rostin Road  
Southaven, MS 38671  
USA

Toll-Free: 1-888-201-6008

Phone: 662-393-1800

Fax: 662-393-1700

Web: [www.terex.com](http://www.terex.com)

Email: [sales@terexca.com](mailto:sales@terexca.com)

For more information, product demonstration or details on purchase, lease and rental plans, please contact your local TEREX Distributor.

Effective date: October 1, 2005. For further information, please contact your local distributor or the TEREX sales office listed. Product specifications are subject to change without notice or obligation. The photographs and drawings in this brochure are for illustrative purposes only. Refer to the appropriate Operator's Manual for instructions on the proper use of this equipment. Failure to follow the appropriate Operator's Manual when using our equipment or to otherwise act irresponsibly may result in serious injury or death. Prices and specifications subject to change without notice. The only warranty applicable is the standard written warranty applicable to the particular product and sale. TEREX makes no other warranty, expressed or implied. Products and services listed may be trademarks, service marks or trade-names of TEREX Corporation and/or its subsidiaries in the USA and other countries and all rights are reserved. "TEREX" is a Registered Trademark of TEREX Corporation in the USA and many other countries. Copyright ©2006 TEREX Corporation.