

MecALAC

TLB830



MecALAC



DESIGNED TO GET YOUR JOB DONE.

1.3YD3 (1M3)
STANDARD
LOADER BUCKET.
(7IN1 OPTIONAL)

SOLID CAST
NOSE PROVIDES
IMPROVED WEIGHT

FULLY TILTING HOOD
FOR EASY ENGINE
ACCESS

LARGER STEERING
CYLINDER REDUCES
STEERING EFFORT

TIER 3 94HP
(70KW) CHARGE AIR
COOLED ENGINE
FOR SMOOTH AND
ECONOMICAL
OPERATION

SYNCHRO SHUTTLE
TRANSMISSION
PROVIDES
TRANSPORT SPEEDS
UP TO 23MPH (38KPH)

POWER-ASSISTED
BRAKES OFFER
EXCELLENT BRAKING
WITH REDUCED
OPERATOR EFFORT

ROPS AND FOPS
CANOPY PROVIDES A
LARGE COMFORTABLE
OPERATORS AREA.
MACHINES WITH
A CAB GET AIR
CONDITIONING AS
STANDARD

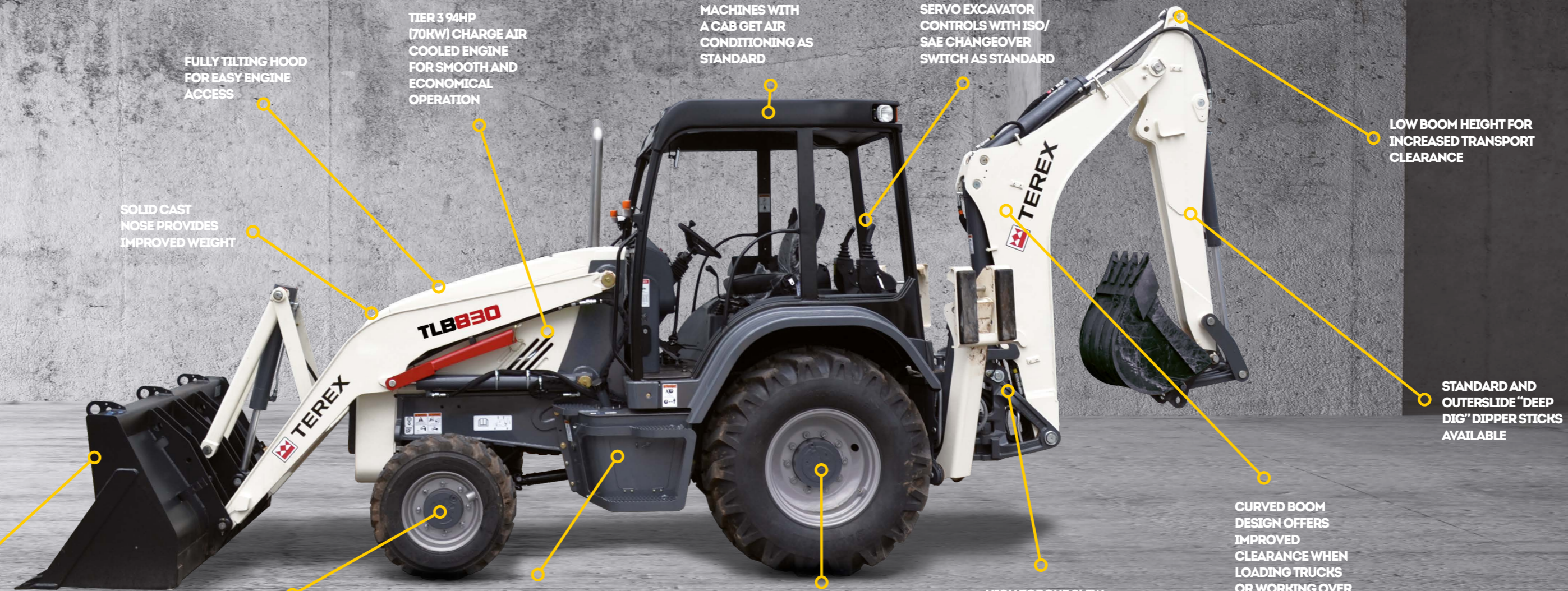
SERVO EXCAVATOR
CONTROLS WITH ISO/
SAE CHANGEOVER
SWITCH AS STANDARD

HIGH TORQUE SLEW
SYSTEM ENSURE
EASY BACKFILLING

CURVED BOOM
DESIGN OFFERS
IMPROVED
CLEARANCE WHEN
LOADING TRUCKS
OR WORKING OVER
OBSTACLES

LOW BOOM HEIGHT FOR
INCREASED TRANSPORT
CLEARANCE

STANDARD AND
OUTERSLIDE "DEEP
DIG" DIPPER STICKS
AVAILABLE





OPERATOR CONTROLS

Any operator can become instantly familiar with the controls of our backhoe loader, with servo excavator controls as standard the ISO/SAE switch can be used to easily switch between Excavator or Backhoe control patterns.



BACKHOE

The curved boom design provides greater clearance when working over obstacles and the ability to load closer into trucks, increasing versatility. Dig depths of up to 17'10" (5.44m) and ground level reach of up to 22' (6.7m) can be achieved with the optional "Deep Dig" dipper stick.



TRANSMISSION

The synchro shuttle transmission provides smooth shifting between all 4 gears and transport speeds of up to 23mph (38kph). Power assisted brakes and selectable 4 wheel braking ensure high braking forces with low operator effort.



ENGINE

The powerful 94hp (70kw) engine with 289lb (392Nm) of torque provides smooth and economical operation. A full opening rear hinged bonnet ensures ground level daily checks both with the loader raised or lowered.



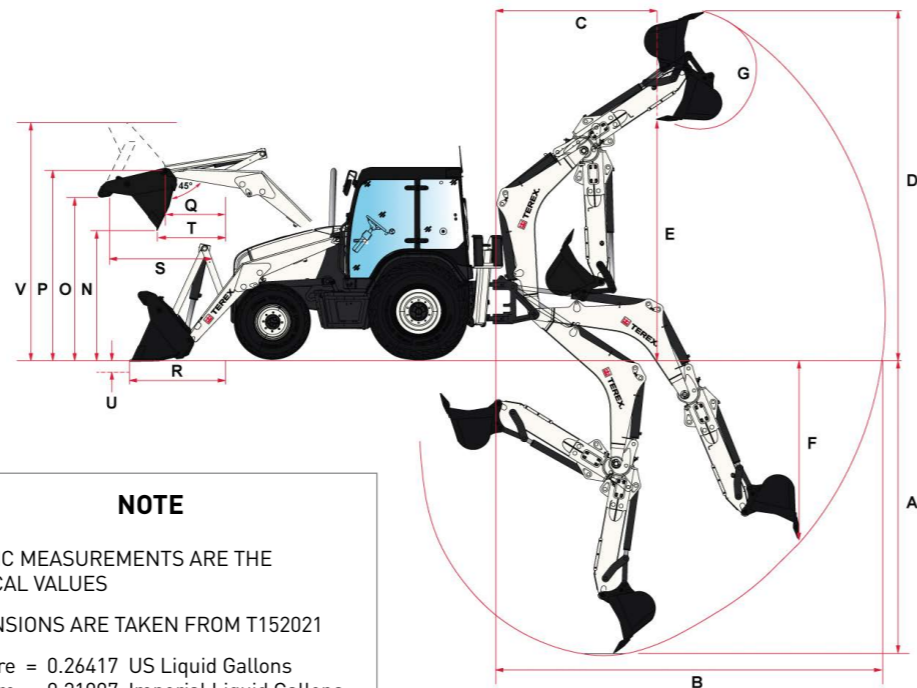
TECHNICAL DATA

BACKHOE DIMENSIONS*		Standard Dipper		Deep Dig Dipper	
		Retracted		Extended	
A	Dig depth Maximum SAE 2 ft Flat Bottom SAE	14'6" [4411mm]	14'6" [4411mm] 14'3" [4337mm]	17'10" [5438mm]	17'7" [5364mm]
B	Reach – ground level to slew	18'8" [5695 mm]	18'8" [5695 mm]	18'8" [5695 mm]	
C	Loading reach	7'7" [2302 mm]	7'7" [2302 mm]	10'4" [3156 mm]	
D	Operating height	17'0" [5182 mm]	17'0" [5182 mm]	18'12" [5782 mm]	
E	Loading height SAE	11'9" [3569 mm]	11'9" [3569 mm]	13'8" [4168 mm]	
	Max dumping height	11'4" [3446 mm]	11'4" [3446 mm]	13'3" [4046 mm]	
F	Straight wall dig depth	7'6" [2298 mm]	7'6" [2298 mm]	10'6" [3210 mm]	
G	Bucket rotation degrees	Speed 194	194	194	194
		Power 164	164	164	164
	Stabiliser spread	9'9" [2980 mm]	9'9" [2980 mm]	9'9" [2980 mm]	
	Max. levelling angle degrees	12	12	12	

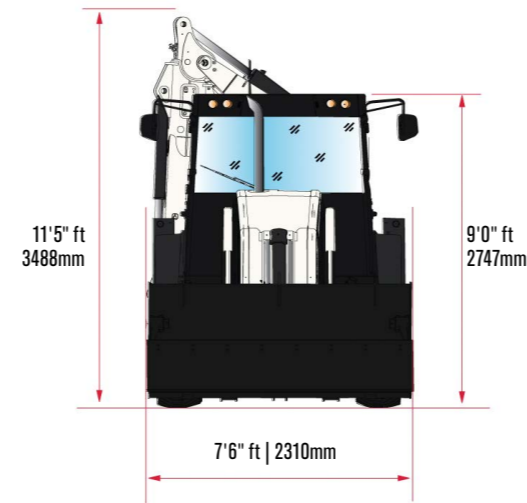
*Includes standard 600mm HD bucket.

LOADER DIMENSIONS		Standard / 7in1 Bucket	
H	Dump clearance – at 45°	8'7" [2609 mm]	
O	Loader height	10'4" [3145 mm]	
P	Hinge pin height	11'2" [3401 mm]	
D	Pin forward reach	1'5" [430 mm]	
R	Reach at ground	5'0" [1525 mm]	
S	Max. reach at full height	2'7" [776 mm]	
T	Reach at full height – at 45°	2'5" [732 mm]	
U	Dig depth	0'10" [251 mm]	
	Rollback at ground	40°	
	Max. dump angle fully raised	50°	
V	Overall operating height	14'1" [4304 mm]	

BACKHOE PERFORMANCE		Standard Dipper		Deep Dig Dipper	
		Retracted		Extended	
		Standard Bucket HD Bucket	Standard Bucket HD Bucket	Standard Bucket HD Bucket	Standard Bucket HD Bucket
	Max slew torque kNm [lbf-ft]	21 [15488.8]	21 [15488.8]	21 [15488.8]	21 [15488.8]
	Dipper tearout kN [lbf]	35.4 [7958] 35.4 [7958]	35.4 [7958] 35.4 [7958]	26 [5845] 26 [5845]	26 [5845] 26 [5845]
	[SAE J49 Standard]				
	Bucket tearout kN [lbf]	47 [10566] 47 [10566]	47 [10566] 47 [10566]	47 [10566] 47 [10566]	47 [10566] 47 [10566]
	Speed	54 [12140] 54 [12140]	54 [12140] 54 [12140]	54 [12140] 54 [12140]	54 [12140] 54 [12140]
	Power				



NOTE
METRIC MEASUREMENTS ARE THE CRITICAL VALUES
DIMENSIONS ARE TAKEN FROM T152021
• 1 Litre = 0.26417 US Liquid Gallons
• 1 Litre = 0.21997 Imperial Liquid Gallons



NOTE: IMAGE IS FOR REFERENCE PURPOSE ONLY

ENGINE	
Perkins 1104D-44T (T3)	Torque Rise 29%
	Mechanical fuel injection
Cylinders	4
Capacity	4.4 L [269 in ³]
Rated speed	2200 rpm
Gross power @ 2200rpm Cert. rating to ISO 14396:2002	70 kW [93.9 hp]
Derived net rating @ 2200 rpm	65.7 kW* [88.1 hp*]
Max Torque @ 1400 rpm	392 Nm [289.1 lbf]
ISO 14396:2002	

*Nominal non-certified values.

ELECTRICAL SYSTEM	
External wiring and connectors meet IP69k standard	
Maintenance free battery	
12 volt negative ground	
Battery isolator	
100 amp alternator	
Blade type fuses	
100 A/hr single battery with 830 CCA-EN Standard	

CAPACITIES	Ltrs (gals)
Fuel tank	140 [37.0]
Engine coolant	17 [4.5]
Engine oil (including filter)	8 [2.11]
Synchro shuttle transmission	20 [5.3]
Rear axle (including final drives)	17.1 [4.5]
Front axle (including final drives)	6.9 [1.52]
Hydraulic tank 52	[13.7]

AXLES AND BRAKES		
Outboard planetary drives for easier servicing		
Foot operated differential lock with 100% lockup		
16° front axle oscillation to maintain maximum ground contact to traction		
Power boosted inboard wet disc brakes		
Self equalizing and self adjusting brakes		
Selectable 2 or 4 wheel braking		

Axle Ratings	Max Static Loading	Max Dynamic Loading
Front kN [lbf]	175 [39342]	70 [15737]
Rear kN [lbf]	187.5 [42152]	75 [16861]

TURNING CIRCLES		
	Over Tyres	Over Bucket
Without brakes m [ft]	7.9 [25'11"]	10.9 [35'9"]
With brakes m [ft]	7 [22'12"]	10 [32'10"]

TRANSMISSION		
4 Speed synchro shuttle gearbox		
Modulated forward and reverse clutch packs enable smooth direction changes		
De-clutch button on gear lever		
Direction control with neutral safety interlock		
Single stage torque converter with 3:01:1 stall ratio		

Tyres	Front:	12 x 16.5 12 PR SKS XTRA
	Rear:	19.5 x 24 12 PR SLA R4
Travel Speeds	Forward/Reverse Km/h [mph]	
1st	5 [3]	
2nd	8 [5]	
3rd	19 [12]	
4th	38 [24]	

HYDRAULIC SYSTEM	
Tandem gear pumps with inloader valve	
Open centre valves	
External oil level gauge	
125 micron suction strainer	
10 micron return line filter	
10 micron filler breather	
Main pump flow @ 2200 rpm L/min(gpm US / gpm)	83 [22 / 18]
Secondary pump flow @ 2200 rpm L/min(gpm US / gpm)	45 [12 / 10]
System main relief setting bar [psi]	250 [3626]

OPERATING WEIGHTS	
Base Machine Weight*	7215 kg [15906 lbs]
Add/Delete	
Deep dig dipper	+ 295 kg [650 lbs]
ROPS frame	- 185 kg [408 lbs]

*Base operating weight includes cab, standard loader bucket, standard dipper stick, 24 in | 600 mm bucket, full fuel tank, standard counter weight 407.85 lbs | 182Kg and 165 lbs | 75Kg operator.

LOADER PERFORMANCE	
	Standard Bucket
Bucket breakout* kN [lbf]	42 [9441.98]
Arms breakout* kN [lbf]	46[10341.2]
Lift capacity to full height** kN [lbf]	3759.34 kg [2336]
Rated operating capacity** kN [lbs]	2813.55 kg [1748]

*Loader specifications are stated in accordance with ISO 14397 and EN474 Part 4.

**Based on basic machine configuration; cab, standard loader bucket, standard dipper stick, 24 in | 600 mm bucket, full fuel tank.

→ STANDARD AND OPTIONAL EQUIPMENT

ENGINE

Perkins 1104D-44TA (Tier 3)
Wastegate turbo charger
Electric fuel pump
Mechanical fuel injection
4 Glow plug starting aid
Horizontal spin on oil filter
Primary fuel filter with water separator
Vertical element secondary fuel filter
500hr service period
Oil to water internal plate type oil cooler
Engine gradeability fore/aft and side/side of 30°
Anti-freeze rated to -37°C
Coolant expansion bottle
Alternator, Fan drive by dual V Belt
Gear driven water pump
Puller type 6 blade cooling fan
Dual element powercore air cleaner
Stainless steel muffler and exhaust stack
Fan Guard

DRIVE LINE

Synchro shuttle transmission 4F/4R speeds
Direction control with neutral safety interlock
Transmission de-clutch on gear and loader controls
Torque converter stall ratio 3.01:1
Easy clean transmission oil cooler
Vertical element oil filter
Foot operated electro/hydraulic differential lock
Inboard planetary final drive axles
Large capacity inboard oil immersed disc brakes - 3 kevlar friction discs per side
Brakes self adjusting and self equalising
Dual brake pedals with combined or independent use
Internal wet disc parking brake - max parking slope (unladen) 1:2 - Laden 1:2.5
Hydrostatic steering with emergency manual operation
4wd Standard
Selectable 2 and 4 wheel braking in all gears
Selectable 2 and 4wdi

CAB AND CANOPY

ROPS/FOPS conform to ISO3471/3449
Access from both sides
Self cleaning footsteps and large grab handles
Anti slip floor mat (Canopy)
Internal rear view mirror
2 Cup holders
Coat hook
Tilt adjustable steering wheel
Side console mounted horn switch
Seat storage for operators manual
2in (51mm) retractable seat belt
Vinyl seat with mechanical suspension (canopy)
1 Auxiliary 12 volt outlet
Cab with 2 door access
Opening rear quarter windows with internal operation
Full depth up and over rear window
Laminated windscreen
Tinted toughened safety glass
Front and rear screen washer and wipers
Fabric seat with mechanical suspension
Cab heater (7.37kw) with Air conditioning (7.6kw cooling)
Front side lights with direction indicators
Internal noise level 78dB (a)
Digital gauge for warning lights, fuel level, engine temperature, RPM and machine hours.
4 Front and 4 rear worklights
2 External power points for beacons

CANOPY OPTIONS

Windscreen with wiper
Lockable vandal covers

CAB OPTIONS

3inch seat belt
Folding external rear view mirrors
Steering wheel spinner

LOADER

Hydro-Mechanical self leveling
Control lever with transmission disconnect button
Single bucket cylinder
Bucket cylinder cushioning
Return to dig
Float position with positive hold
Bucket level indicator
Integral loader arm safety bar
Standard 1m ³ bucket with lifting eye
Bucket teeth or bolt on reversible cutting edge

OPTIONS

7in1 1m ³ bucket with lifting eye
3rd Hydraulic line with standard bucket
Pallet forks with safe working load of 1000kg
Ride control
Loader bucket return to dig

BACKHOE

Curved style boom
Standard dippestick
Outer slide "deep dig" dipperstick
Externally adjustable lubrication free wear pads
Thumb cylinder mounting bracket incorporated
Replaceable serrated clamping plates
Dual transport lock - cable operated
Servo excavator controls
ISO/SAE pattern change switch
24" Heavy duty excavator bucket
Stab leg lock out valves

OPTIONS

Mechanical quick attach
Auxiliary hydraulics with single and double acting operation

GENERAL POINTS

Heavy duty chassis construction
Lockable side mounted toolbox
Fully tilting engine hood
Front hard nose counter weight
Lifting eyes and tie downs (2 front and rear)
12.5" Front and 24" rear Mitas tyres

OPTIONS

Front fenders
Cold start kit